



Commercial **KENNELS**



Designed To Bring You
Exceptional Results

*& give your dogs the
healthiest environment
possible*

Welcome...

If you are operating a pet rescue or breeding facility you are raising a future family member for someone. The high standards that today's customers have come to expect of you can be challenging! We assure you that it is possible with the innovative and well designed kennel systems that we offer.

- **Our easy Wash Down Systems** make keeping the kennel almost spotless fairly easy.
- **Climate Control** that can make the kennel temp as comfortable as the home they will live in
- **Innovative Whelping Solutions** keep more puppies alive than ever before, with much less work
- **Feeding & Watering Systems** that work with any layout, and fencing. We have a system for everyone. Some of our watering solutions require little to no work from you, while keeping fresh water access for the dogs at all times!
- **Multiple Cabinet Options** - Our aluminum cabinets are as lovely as your home's cabinets, but can be washed down with a hose!
- **Ventilation & Air Exchange** that can keep the air in your kennel much cleaner and fresher than you every imagined!
- **Many Fencing Options** - all of our fencing panels are custom made, so we can make your kennels in any formation you want, as well as replace and change the formations as needed.

We give our customers the ability to completely customize their kennel according to their unique situation. We strive to not only provide a safer and healthier environment for your pets but to save you time and effort as well. Providing you with a kennel of superior quality that will last you for many years to come is the goal that we strive for every day.



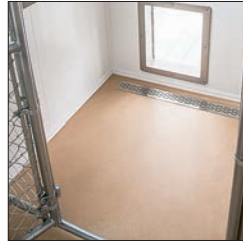
Commercial Kennels	4-49
Features Info	50-51
Kennel Fencing	52-61
Kennel Dividers/Panels.....	62
Kennel Run Options.....	63-65
Dog Doors and Accessories ...	66-67
Doors & Windows	68
Lighting & Power	69
Whelping & Heating	70-71
Feeders and Waterers	72-73
Air Quality Control.....	74-75
Water Access	76-77
Restrooms	78
Weaning	78-79
Grooming Stations	80-81
Aluminum Cabinets	82-84
Kennel Exteriors	85
Color Options	86-87

Standard Features

The quality standards our customers have come to expect in our kennel's construction.



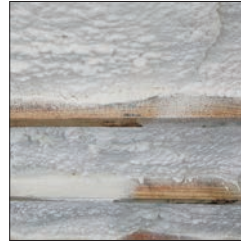
Pressure Treated
2x4 Floor Joists
4x6 Runners



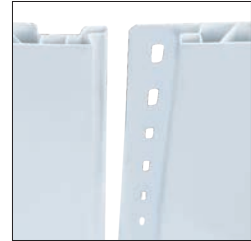
5/8" Smartfloor
Coated With Poly-Urea
(Very Durable And Totally
Watertight)



R-13 Batten Insulation In
Walls & Ceiling



R-13 Closed Cell Spray
Foam Insulation In Floor



Pvc Trusscore Lined
Durable & Very Easy To
Clean- Hidden Fastener
System



Vinyl Posts



4' High Glassboard On
Exterior Run Wall



Vented Soffit



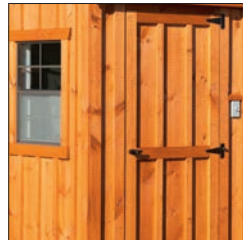
Vented Ridge Cap



Insulation Baffles



Lp Smartside Siding
(Same T1-11 Look)
Painted - Color Of Your
Choice



Pine Board / Batten Siding
(Stained The Color Of Your
Choice)



Spring Loaded
20" Plexiglas Dog Door



Molded Plastic
Doggie Hole Trim Kit



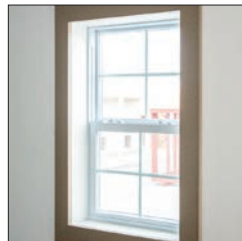
6-Panel White Entry Door



Shingle Roof
30 - Year Architect Shingles



Cathedral Ceiling
Makes Your Kennel And
Dogs Feel Less Confined



Screened 24" X 36"
Insulated Double Hung
Windows With Grids &
Low E



Composite Decking
On Runs



11.5 Ga Chain-Link Panels

We customize to fit your needs!



30' x 60' Double-Wide Kennel

Cedar, MI

- Metal Siding - Black Textured
- White Trim
- Black Metal Roof
- Radiant Floor Heat
- Bathroom with Vanity & Toilet
- Spick Drains Inside & Out
- Deluxe Dog Doors
- S.S. Trim Kits
- Sloped Floors Inside & Out
- 72" Alum. Cabinet with Sink & Counter
- 4' H Solid Dividers Inside
- 6' H Solid Dividers Outside
- 4" Raised Floors in Kennels
- 7'x7' Overhead Door
- Hinged Roof w/ 7/12 Pitch



Features On This Custom Built Kennel:

Metal Roof - Our roofs are insulated, and have multiple layers including house wrap to give you superior long lasting protection

Metal Siding - Metal siding offers long-lasting durability, low maintenance, energy efficiency, fire resistance, and modern curb appeal.

Raised Floor Inside - This kennel has raised floor inside pens, but ground level runs. To compensate, steps have been built outside to make it easier for dogs.

Timber Frame Porch - Adding a timber frame porch makes your kennel less utilitarian and more a thing of beauty!

Restrooms - No more wasted time running to the house to use the restroom! This is a wonderful convenience!

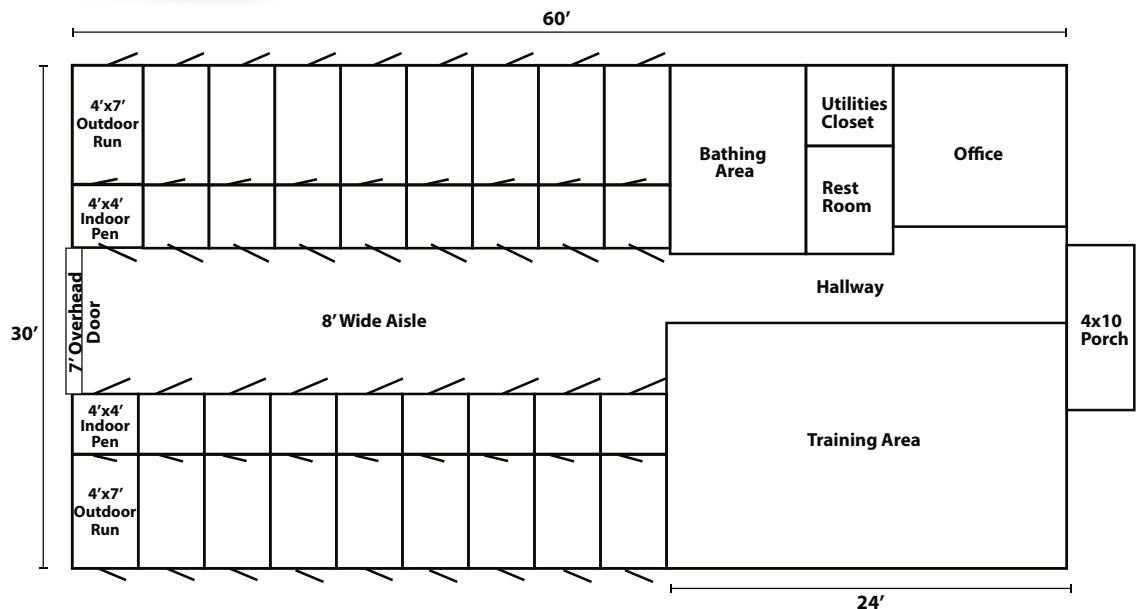
Spick Drain - This kennel has slanted kennel flooring which helps drain all wash down water, hair, and waste right out of the kennel! This is a huge time saver!

6' High Norlock Divider Panels - Avoid high jumpers from accessing other dog's areas

Lixit Water Lines - combining this feature with in-floor drains in the kennel boxes has been a huge hit.

Overhead Garage Door - Unloading supplies and food just got easier. No more worries about the new equipment fitting in the door. A garage door solves lots of problems.

Radiant Floor Heat System - Consistent, even heat throughout the kennel without the stuffiness that some heating systems can bring!



We customize to fit your needs!



23' x 60' 9 Run Kennel w/10x15 Office

East Earl, PA

Dk Gray Siding
Black Trim
Black Metal Roof
6 - 34x40 Double Hung Windows
2 - 20x40 Slider Windows
Gray PVC Run Flooring
White Glassboard Run Wall
Powder Coated Aluminum Fencing



*Made to Fit Your Vision:
From layout to materials and
features, nearly every part of
our kennels can be customized.
We work with you to create
a setup that fits your exact
needs—because no two kennel
operations are the same.*



Features On This Custom Built Kennel:

Metal Roof - Our roofs are insulated, and have multiple layers including house wrap to give you superior long lasting protection

Canine Dog Doors - w/ dual swing hinges & soft close. Easiest dog door to learn how to use! Ideal for boarding kennels & rescues

Raised Floor Inside - This kennel has raised floor inside pens, but ground level runs. To compensate, steps have been built outside to make it easier for dogs.

Raised Weaning Pens in Main Area - This allows you to interact with the pups that need you the most to give them the best start and to keep an eye on any that might be struggling.

EZS Whelping Nests x 5 - Give your puppies a better chance of survival!

Electric Hot Water Heater - 20 Gal. Humidifier Dehumidifier

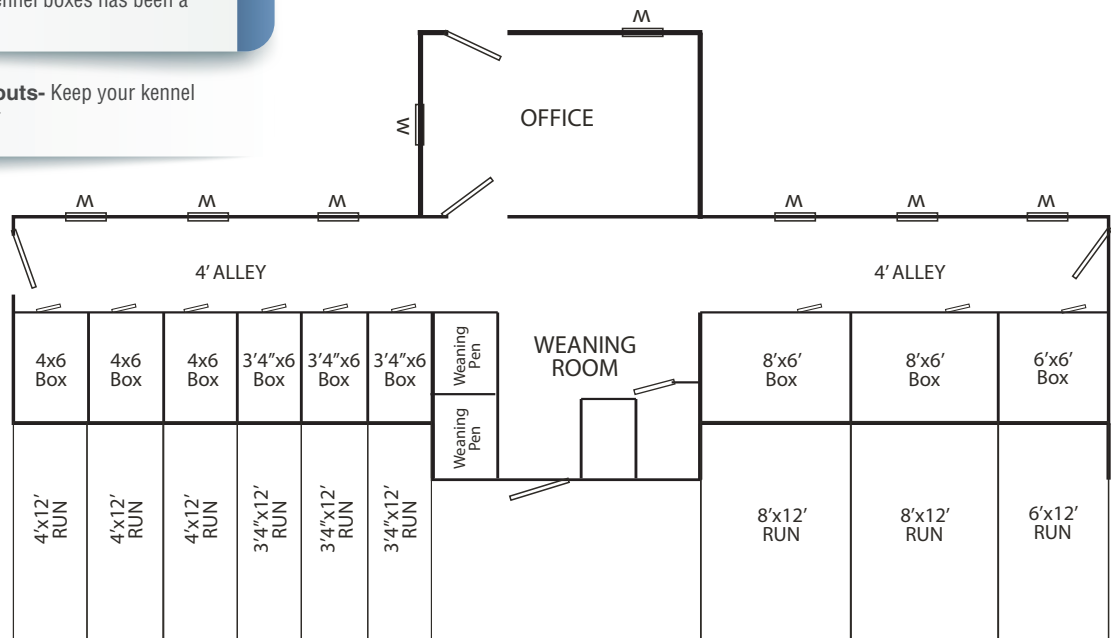
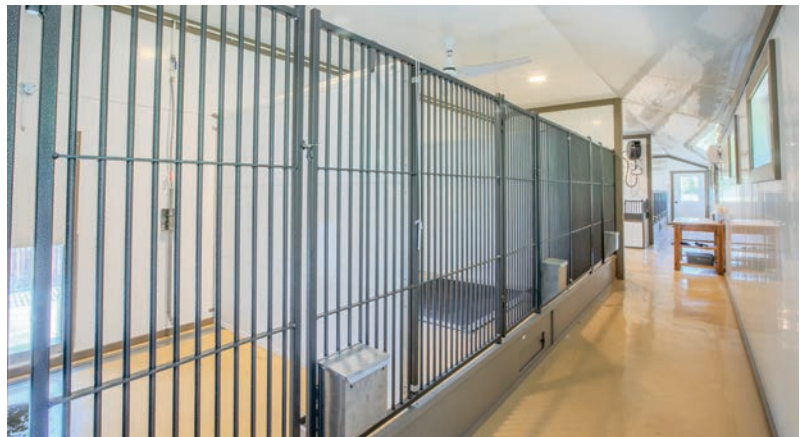
40" Floor Drains - We highly recommend these in each kennel as well in all main areas

Air Flow - This kennel uses a 16" exhaust fan, 3 ceiling fans, and a 30,000 BTU mini split air conditioner

6' High Norlock Divider Panels - Avoid high jumpers from accessing other dog's areas

Lixit Water Lines - combining this feature with in-floor drains in the kennel boxes has been a huge hit.

Gutters & Downspouts- Keep your kennel looking better - longer



We customize to fit your needs!



20' x 48' 8 Run Kennel

New Holland, Pa

Clay Metal Siding
Bronze Trim
Bronze Metal Roof
1- 24x36 Double Hung Windows
5- 36x36 Slider Windows
18,000 BTU Mini Split
Water Heater
Raised Floor
Tan PVC Run Flooring
6' Hinged Overhangs
6ga Welded Wire Fencing Panels



Built To Last!

With proper care, our kennels can continue looking like new—year after year. Durable, thoughtfully designed, and made to stand the test of time.

Features On This Custom Built Kennel:

Metal Roof - Our roofs are insulated, and have multiple layers including house wrap to give you superior long lasting protection

Raised Dog Floor - make it easier to interact and care for your dogs. Also makes it easier to keep clean, and allows for heated floor.

Radiant Floor Heat System - Consistent, even heat throughout the kennel without the stuffiness that some heating systems can bring!

Double Feeder Bowls - These can be installed in door or side panel of fencing, depending on preference - We build the panels to work for you.

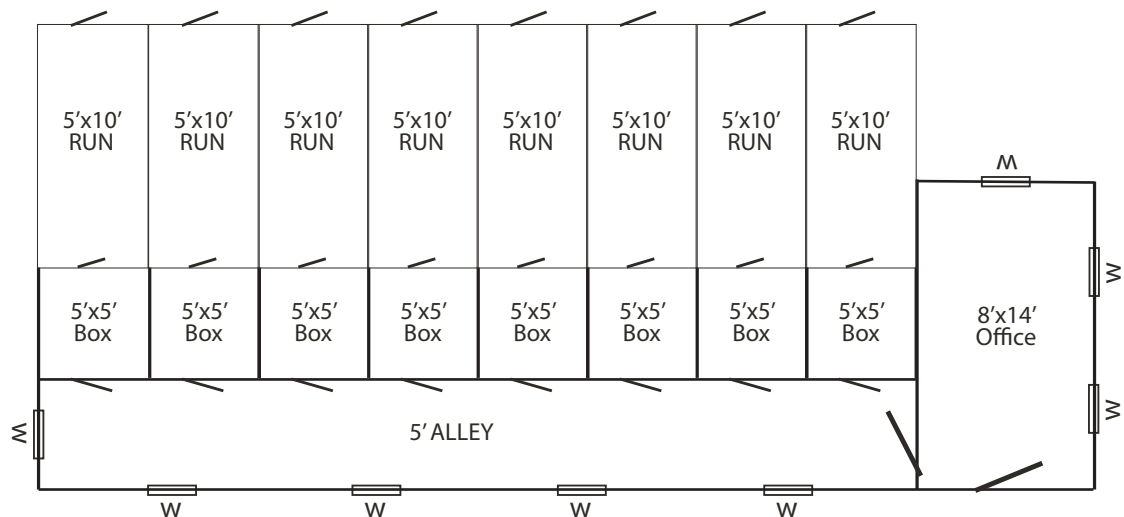
OnDemand Water Heater - Hot & cold water in the kennel is a wonderful thing!

40" Floor Drains - We highly recommend these in each kennel as well in all main areas

16" Exhaust Fan & 4 Ceiling Fans - best option for keeping fresh air moving through the kennel.

2' High Divider Panels w/Welded Wire - The lower solid divider panels is great for smaller dogs. It allows for the comfort of having their own space, but allows for a lot of air flow.

Electrical Package - lights, temp control, whelping nests, and more - You need this.



We customize to fit your needs!



14' x 44' 10 Run Kennel

Christiana, Pa

Clay Metal Siding

White Trim

Bronze Metal Roof

6- 36x36 Double Hung Slider Windows

3- 20x40 Double Hung Slider Windows

1- 24x36 Double Hung Window

24" Dog Doors

LP Tankless Water Heater

Gray PVC Run Flooring

Raised Kennel Floor

Radiant Floor Heat System

5 Whelping Nests

24x72 Aluminum Base Cabinet

Welded Wire Fencing Panels

Dormer on Front

5 Guillotine Dog Doors



Features On This Custom Built Kennel:

Radiant Floor Heat System - Consistent, even heat throughout the kennel without the stuffiness that some heating systems can bring!

Whelping Nests - These are a very popular item that are an easy and safe solution to keeping the pups warm without the mom getting overheated.

6 Ga Welded Wire - The 2x4 welded wire is a very popular choice which works well for most breeds. Strong, but still economical

4' Norlock Dividers - This height allows for even larger dogs to have a safe space without being bullied by the dog in the next space, while still allowing good airflow above the kennels

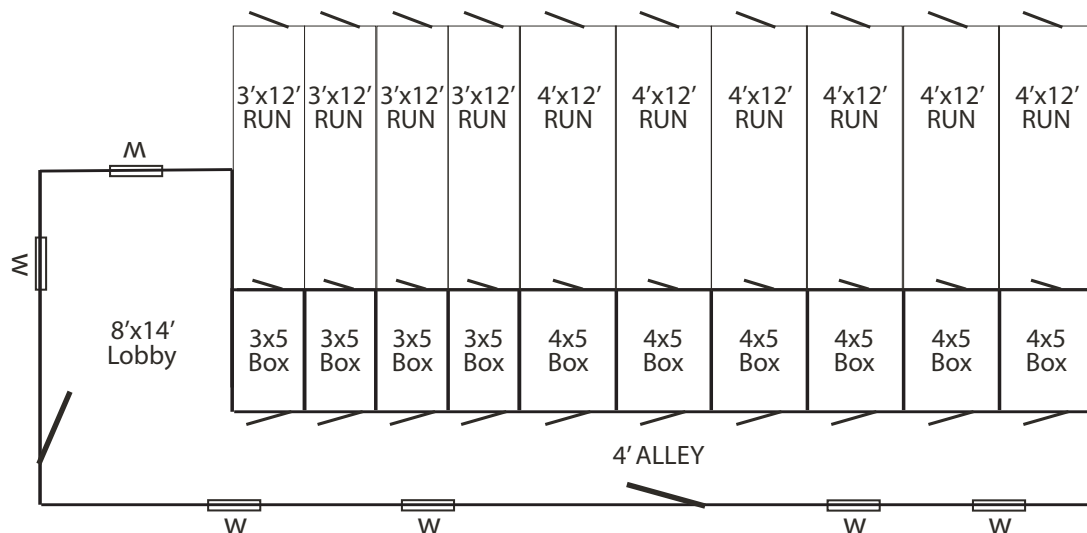
L-P Tankless Water Heater - Our EZ tankless system gives you access to hot water when you need it.

40" Floor Drains - We highly recommend these in each kennel as well in all main areas

15,000 BTU AC Unit - This unit does a good job at keeping the kennel comfortable for you and your dogs even on hot summer days.

Dormer - Make your kennel attractive and less utilitarian - so it can enhance the look of your property.

Electrical Package - lights, temp control, whelping nests, and more - You need this.

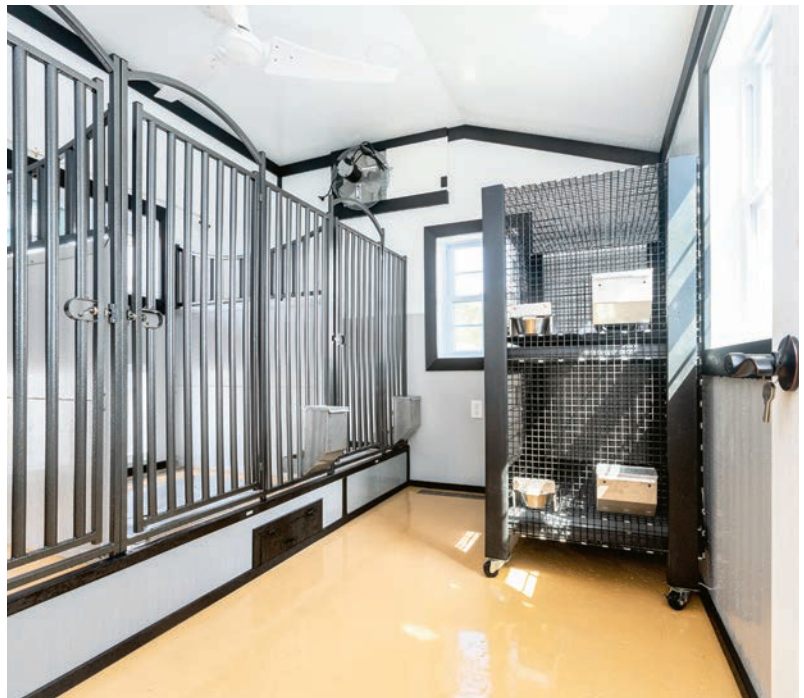


We customize to fit your needs!



20' x 40' 7 Run Kennel w/ 6' Extended Run Floors

Bone White & Pewter Gray Metal Siding
White Trim
Ash Gray Metal Roof
Radiant Floor Heat w/Combi Boiler
Raised Kennel Floor
6 - 24x36 Double Hung Windows
2 - 20x40 Slider Windows
2 - Pre-Hung 9-Lite Door
24" Canine Dog Doors
4' High Solid dividers with Fencing
Toppers
Powder Coated S.S. Fencing Panels
Exterior - Aluminum Fencing Panels
Aluminum Cabinets
On Demand Water Heater
Gray PVC Run Flooring
White Glassboard Run Wall
Exterior Entrance Light
Exterior Run Lights x 3



Features On This Custom Built Kennel:

Metal Roof - Our roofs are insulated, and have multiple layers including house wrap to give you superior long lasting protection

24" Canine Dog Doors - w/ translucent panel to allow light into the kennel. This is a quiet closing door which is great to help keep stress levels low.

Radiant Floor Heat - consistent heat for you and each dog, easy to control heating for different areas. This feature takes your kennel from very convenient, to very amazing!

Aluminum Cabinets - These aluminum cabinets are perfection! Heavy duty, will never rust, smooth open drawers, many color options. Spraying these down will never be a problem!

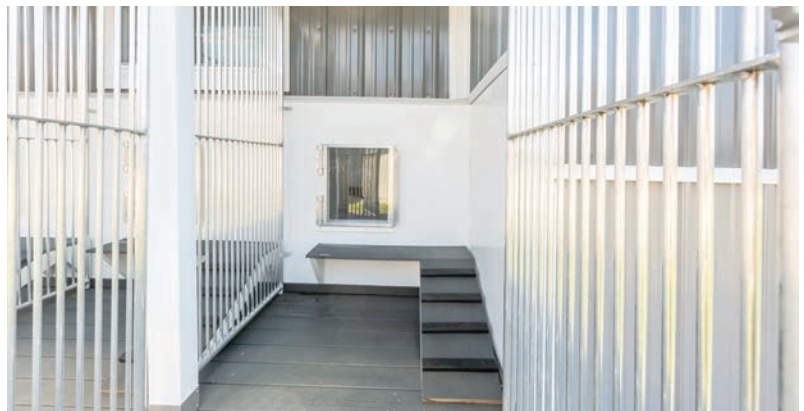
Norlock Dividers - Norlock Divider Panels are the best! Solid, and very easy to clean. Manufactured for agricultural use!

40" Floor Drains - We highly recommend these in each kennel as well in all main areas

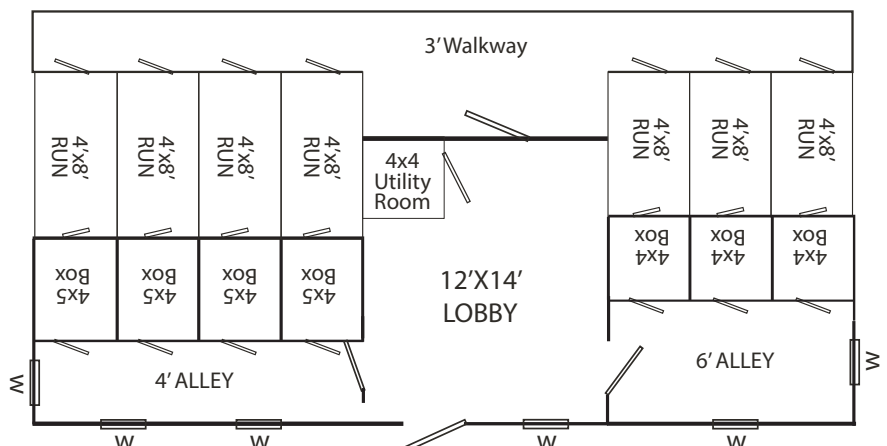
16" Exhaust Fans - best option for keeping fresh air moving through the kennel.

24x54 Puppy Bath & Drying Cage - We custom build puppy wash stations to your specs, so your preferences can be built right into the kennel!

Electrical Package - lights, temp control, whelping nests, and more - You need this.



New Builds & Renovations!
Years of experience have honed our ability to not only build new kennels that work well, but also custom fit your existing kennel. Let's talk about the kennel changes you have in mind!



We customize to fit your needs!



15' x 56' 12 Run Kennel

Elkton, MD

Dk Gray Siding
Light Gray Siding
Black Trim
Black Metal Roof
5 - 34x40 Double Hung Windows
5 - 20x40 Slider Windows
Happy Pet Kennel System
3 - EZS Built-In Whelpers
Tan PVC Run Flooring
White Glassboard Run Wall
SS Exterior Kennel Fencing
Raised Kennel Floor



Distinctive Designs

As you can see on the kennel above, we can make your kennel a thing of beauty, and not an eyesore as many people tend to think of it as. Tell us your needs and lets brainstorm together!

Features On This Custom Built Kennel:

Metal Roof - Our roofs are insulated, and have multiple layers including house wrap to give you superior long lasting protection

Plexiglas Dog Doors - Added Kwiet Klose to keep down noise level.

Pre-Hung Full Glass Door - Let in as much light as possible!

4 lb Stainless Steel Feeders w/Lids - Almost indestructible! These are installed where they work best for you. Easy feeding solutions!

Windows - This kennel has 10 windows in the kennel area, making it a bright and airy space!

Lobby - Having a space to allow clients to meet pups indoors was important, and a 10x15 lobby makes that possible.

16" Exhaust Fan - best option for keeping fresh air moving through the kennel.

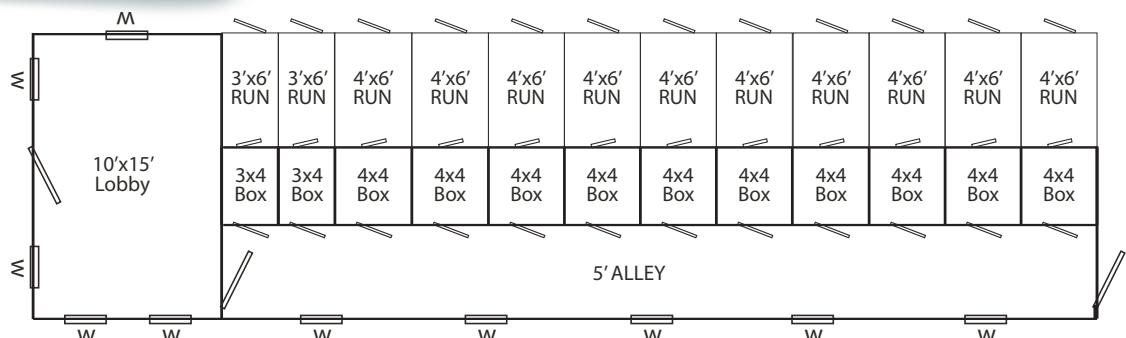
Small Breed Setup - The Happy Pet kennel system is perfect for small breeds. Easy to interact with the dogs as you walk by = happier pups!

Electrical Package - lights, temp control, whelping nests, and more - You need this.

Gutters & Downspouts- Keep your kennel looking better - longer

Stainless Steel Powder Coated fencing on Exterior Runs - with Norlock panel dividers

R-21 SprayFoam - for extra insulation



We customize to fit your needs!



15' x 40' 8 Run Kennel

Spring Glen, PA

Dk Gray Painted Duratemp
Black Trim
Black Shingles
6 - 36x36 Slider Windows
Gray PVC Run Flooring
White Glassboard Run Wall
5.5' Welded Wire Exterior Fencing
Powder Coated SS Interior Fencing
3 - EZS Built-In Whelpers
Raised Kennel Floor



Features That Work

*We love finding ways to make kennels work better for you!
We are constantly innovating and changing designs and construction to offer only the very best options for you and your dogs.*

Features On This Custom Built Kennel:

Shingle Roof - Our roofs are insulated, and have multiple layers including house wrap to give you superior long lasting protection

Radiant Floor Heat w/ Combi Boiler - The perfect solution for consistent warmth throughout the whole kennel. A wonderful feature!

Deluxe Dog Doors - Added Kwiet Klose to keep down noise level.

Pre-Hung 9-Lite Doors - a draft free entry door is worth the upgrade!

7 lb Stainless Steel Feeders w/Lids - Almost indestructible! We custom build your fencing to have these installed where you want them.

Fiberglass Wash Sink - a low cost addition that will add so much convenience!

40" Floor Drains - We highly recommend these in each kennel as well in all main areas

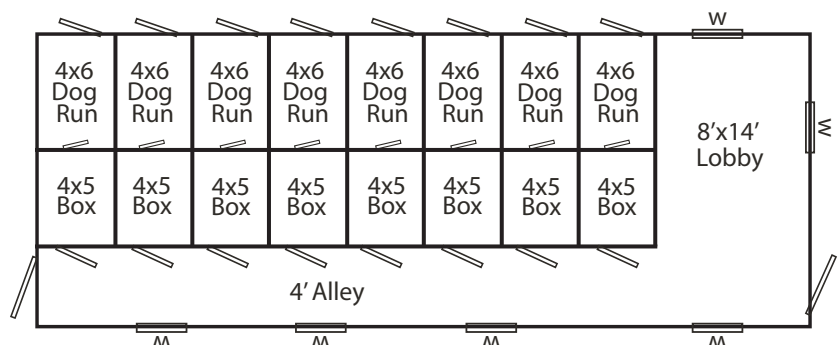
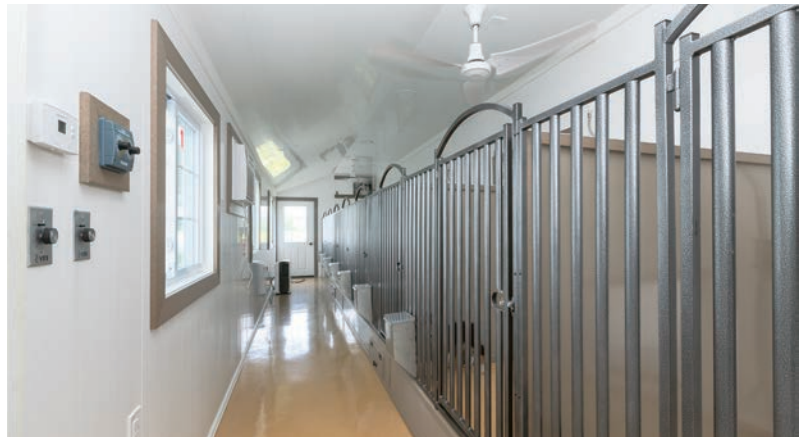
5' High Divider Panels - Shown with older style, We now use Norlock Panels

Electrical Package - lights, temp control, whelping nests, and more - You need this.

Lixit Water Lines - combining this feature with in-floor drains in the kennel boxes has been a huge hit.

EZS Built-in Sloped Whelping Nests - electric

Double Stack Weaning Cage - with heavy duty litter trays



We customize to fit your needs!



15' x 32' 8 Run Kennel

Herndon, PA

Brown Metal Siding
 Tan Metal Siding
 Brown Metal Trim
 Brown Metal Roof
 2 - 36x36 Slider Windows
 2 - 20x40 Slider Windows
 Tan PVC Run Flooring
 White Glassboard Run Wall
 5.5' Welded Wire Fencing



Spacious, practical, and thoughtfully designed—this 15'x32' kennel gives you room to care for multiple dogs comfortably. It's built to make daily care and cleaning easier. A solid choice when you want quality without over-complicating things.



Features On This Custom Built Kennel:

Metal Roof - Our roofs are insulated, and have multiple layers including house wrap to give you superior long lasting protection

Pre-Hung 9-Lite Door - a draft free entry door is worth the upgrade!

Hose Port - a necessity to keep your kennel clean without breaking your back! Hot & cold water in the kennel is a wonderful thing!

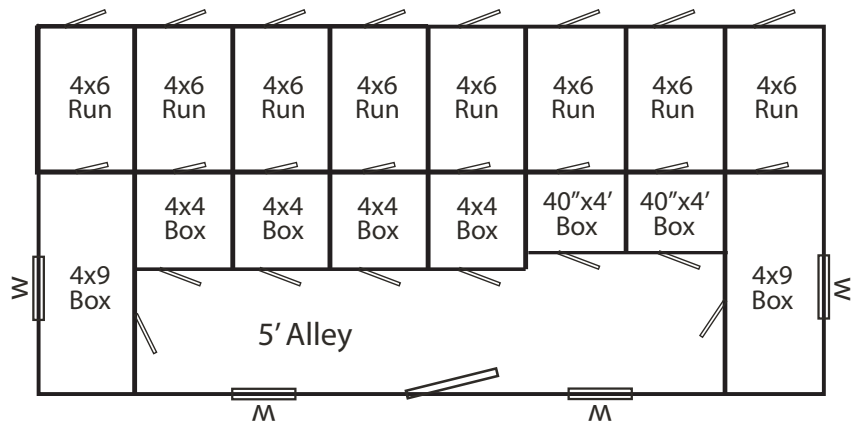
Fiberglass Wash Sink - a low cost addition that will add so much convenience!

40" Floor Drains - We highly recommend these in each kennel as well in all main areas

16" Exhaust Fan - best option for keeping fresh air moving through the kennel.

5.5' High Divider Panels w/Welded Wire Topper - Shown with discontinued style dividers. We now use Norlock Panels.

Electrical Package - lights, temp control, whelping nests, and more - You need this.



We customize to fit your needs!



14' x 40' 7 Run Kennel w/6' Extended Run Floors

Crofton, MD

Dk Gray Siding
Light Gray Siding
Black Trim
Black Metal Roof
6 - 34x40 Double Hung Windows
2 - 20x40 Slider Windows
Raised Kennel Floor
Gray PVC Run Flooring
White Glassboard Run Wall
5.5' Welded Wire Fencing
Washer/Dryer Hookup
36x46 EZS Whelping Nests
Radiant Floor Heat



Testimonial:

"Honestly, I like everything about the kennel. The features are great, everything's laid out just right, and it's super easy to work with and keep clean. Make sure you do your research before you buy anywhere - I always recommend this business!"

- A Tyrell

Features On This Custom Built Kennel:

Metal Roof - Our roofs are insulated, and have multiple layers including house wrap to give you superior long lasting protection

Canine Dog Doors - w/ plexi panel to allow light in & soft close. Heavy Duty and Quiet!

12x14 Lobby - A space for a dog wash station, a desk, washer & dryer! Great Layout!

7 lb Stainless Steel Feeders w/Lids - Almost indestructible! We custom build your fencing to have these installed where you want them.

Hose Port - a necessity to keep your kennel clean without breaking your back! Hot & cold water in the kennel is a wonderful thing!

Fiberglass Wash Sink - a low cost addition that will add so much convenience!

40" Floor Drains - We highly recommend these in each kennel as well in all main areas

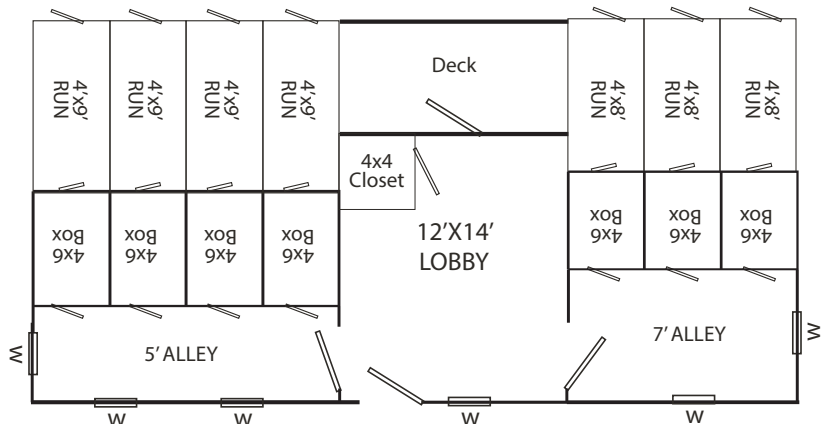
Two 16" Exhaust Fan - and a ceiling fan in every room - best option for keeping fresh air moving through the kennel.

5' High Divider Panels w/ Welded Wire Topper - This size was chosen to accommodate larger aggressive breeds.

Electrical Package - lights, temp control, whelping nests, and more - You need this.

Lixit Water Lines - combining this feature with in-floor drains in the kennel boxes has been a huge hit.

Washer/Dryer Hook Up - This is especially helpful - always have clean towels and rags in the kennel!



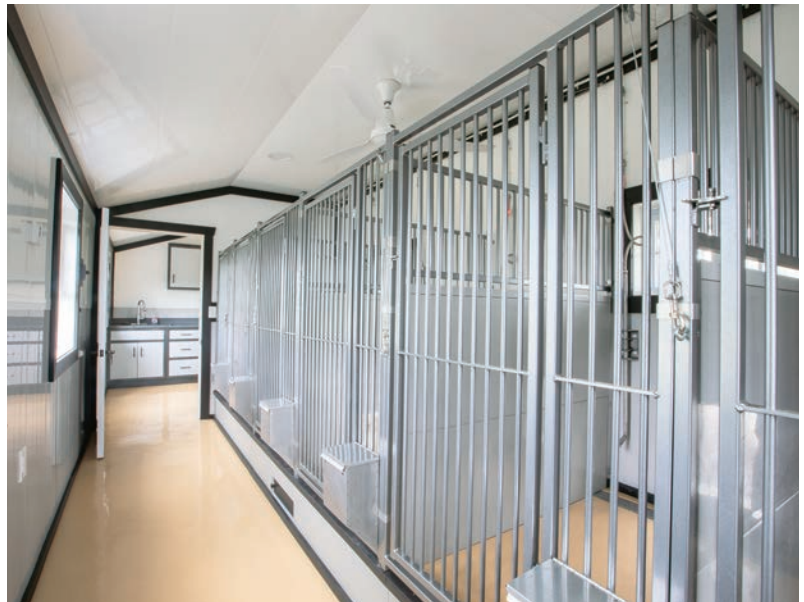
We customize to fit your needs!



14' x 40' 6 Run Kennel w/ Dormer

Gordonville, PA

Dk Gray Siding
Light Gray Siding
White Trim
Gray Metal Roof
7 - 34x40 Double Hung Windows
2 - 20x40 Slider Windows
Gray PVC Run Flooring
White Glassboard Run Wall
40" Welded Wire Fencing on Exterior w/
20" Solid Norlock Panels
Powder Coated Aluminum Kennel Fenc-
ing Inside
Norlock Kennel Divider Panels



This customer did an amazing job with the landscaping and fencing around his kennel! Your kennel look this good too! Let's talk about what you need.

Features On This Custom Built Kennel:

Metal Roof & Siding - Our kennels are insulated, and have multiple layers including house wrap to give you superior long lasting protection

Radiant Floor Heat w/ Combi Boiler - The perfect solution for consistent warmth throughout the whole kennel. A wonderful feature!

Deluxe Dog Doors - Heavy duty. We recommend Kwiet Klose be added to keep noise level down.

Aluminum Powder Coated Fencing panels in Interior - very durable and beautiful - choose your color

7 lb Stainless Steel Feeders w/Lids - Almost indestructible! We custom build your fencing to have these installed where you want them.

72" Aluminum cabinets - You won't believe the quality till you open one! Shown in silver vein, arctic vein & Graphite counter top.

40" Floor Drains - We highly recommend these in each kennel as well in all main areas

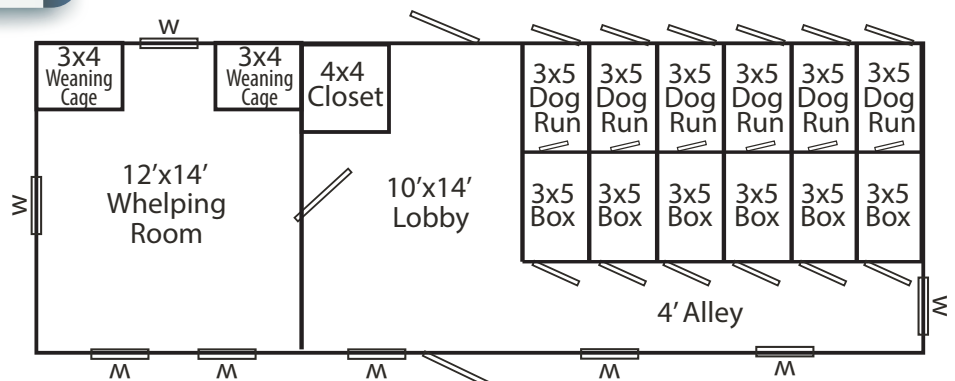
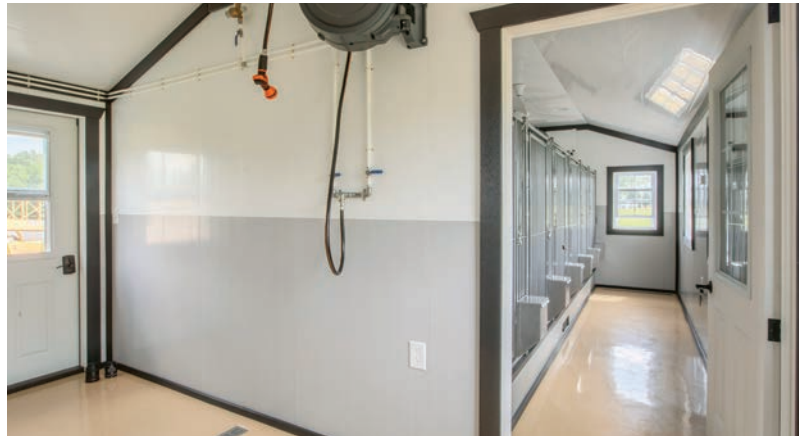
Two 16" Exhaust Fan - and a ceiling fan in every room - best option for keeping fresh air moving through the kennel.

5' High Divider Panels w/ Alum PC Topper Inside - Shown with gray Norlock panels

Guillotine Dog Doors - A quick and easy way to close the dog doors without entering the kennel - so you can wash-down the kennel without getting wet dogs.

Lixit Water Lines - combining this feature with in-floor drains in the kennel boxes has been a huge hit.

Double Stack Weaning Cage - with heavy duty litter trays



We customize to fit your needs!



14' x 36' 7 Run Kennel

New Holland, PA

- Clay Metal Siding
- Bronze Metal Trim
- Bronze Metal Roof
- 6 - 24x36 Double Hung Windows
- 3 - 20x40 Slider Windows
- 18,000 BTU Mini-Split AC
- Raised Floors
- 2 - 28x36 Whelpers
- Interior Drains
- EZ Tankless Water Heater
- Aluminum Cabinets
- Tan PVC Run Flooring
- 40" Welded Wire Fencing on Exterior
- Happy Pet Kennel Fencing in Interior
- Keypad Entry Deadbolt



Features On This Custom Built Kennel:

Metal Roof & Siding - Our kennels are insulated, and have multiple layers including house wrap to give you superior long lasting protection

7 lb Stainless Steel Feeders w/Lids - Almost indestructible! We custom build your fencing to have these installed where you want them.

72" Aluminum cabinets - You won't believe the quality till you open one! Shown in silver vein, Sand Stone & Desert Sand counter top.

40" Floor Drains - We highly recommend these in each kennel as well in all main areas

Two 16" Exhaust Fan - and a ceiling fan in every room - best option for keeping fresh air moving through the kennel.

Lixit Water Lines - combining this feature with in-floor drains in the kennel boxes has been a huge hit.

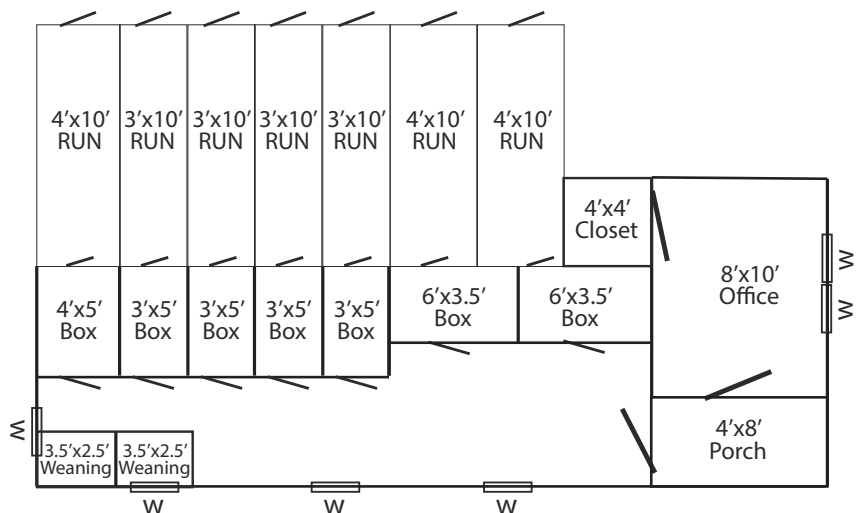
Happy Pet Kennel Fencing in Interior
This is the ultimate system for smaller dogs! Easy access and gentle smooth surfaces for delicate breeds.

28x36 Whelpers - These mobile whelping pens are easy to clean and a economical choice if you want to move them from cage to cage as pups are born.



Here to Serve

We do our best to serve each customer with care and integrity. From the first conversation to the final build, we strive to listen well, work hard, and humbly meet your needs with quality craftsmanship you can trust.



We customize to fit your needs!



14' x 32' 8 Run Kennel

Lincoln University, PA

- Flint Vinyl Siding
- Charcoal Trim
- Charcoal Shingles
- 4 - 34x40 Double Hung Windows
- 3 - 20x40 Slider Windows
- Gray PVC Run Flooring
- White Glassboard Run Wall
- 5' Welded Wire Fencing Outside
- 4' Welded Wire Fencing Inside
- 4' Solid Divider Panels Inside
- Exterior Wash-down w/3' tenderfoot
- EZ Tankless Water Heater
- 3 - Electric Whelpers
- 12"x18" Dog Doors
- Direct Vent LP
- 16 in Exhaust Fan & 2 Ceiling Fans



Features On This Custom Built Kennel:

Raised Floor - Inside & Out. This makes caring for your dogs much easier!

Plexiglas Dog Doors - These dog doors have a Plexiglas panel to allow soft light into the kennel area. We recommend Kwiet Klose be added to keep noise level down.

Pre-Hung 9-Lite Door - a draft free entry door is worth the upgrade!

Electric Whelpers x 3 - Built into the floor and just as easy to clean as the floor around it.

Hose Port - a necessity to keep your kennel clean without breaking your back! Hot & cold water in the kennel is a wonderful thing!

Fiberglass Wash Sink - a low cost addition that will add so much convenience!

40" Floor Drains - We highly recommend these in each kennel as well in all main areas

16" Exhaust Fan - best option for keeping fresh air moving through the kennel.

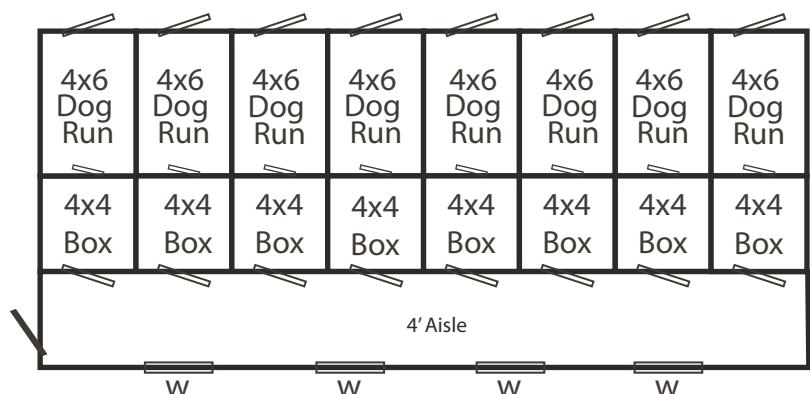
4' High Divider Panels - Shown with discontinued panels, we now use Trusscore divider panels

Electrical Package - lights, temp control, whelping nests, and more - You need this.



Golden Rule

We strive to treat others the way we'd want to be treated—with honesty, respect, and a commitment to doing what's right. It's a simple principle, but it guides everything we do.



We customize to fit your needs!



14' x 26' 9 Run Kennel

Quarryville, PA

Bone White Painted Duratemp

Black Trim

Black Metal Roof

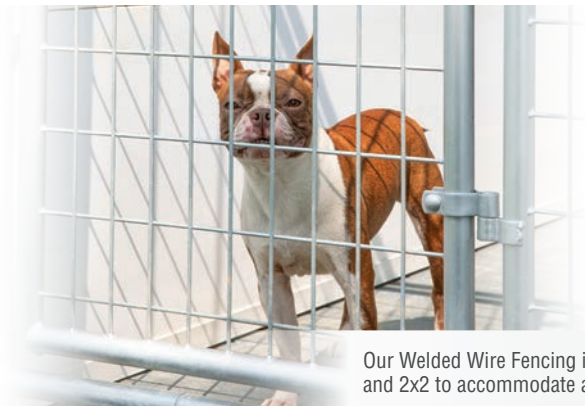
3 - 34x40 Double Hung Windows

2 - 20x40 Slider Windows

Gray PVC Run Flooring

White Glassboard Run Wall

5.5' Welded Wire Fencing



Our Welded Wire Fencing is available in 2x4 and 2x2 to accommodate all sizes of dogs.



Features On This Custom Built Kennel:

Metal Roof - Our roofs are insulated, and have multiple layers including house wrap to give you superior long lasting protection

Radiant Floor Heat w/ Combi Boiler - The perfect solution for consistent warmth throughout the whole kennel. A wonderful feature!

Plexiglas Dog Doors - These dog doors have a Plexiglas panel to allow soft light into the kennel area. We recommend Kwiet Klose be added to keep noise level down.

7 lb Stainless Steel Feeders w/Lids - Almost indestructible! We custom build your fencing to have these installed where you want them.

Fiberglass Wash Sink - a low cost addition that will add so much convenience!

Solar System - Make use of the sun to power your kennel!

Guillotine Dog Doors - A quick and easy way to close the dog doors without entering the kennel - so you can wash-down the kennel without getting wet dogs.

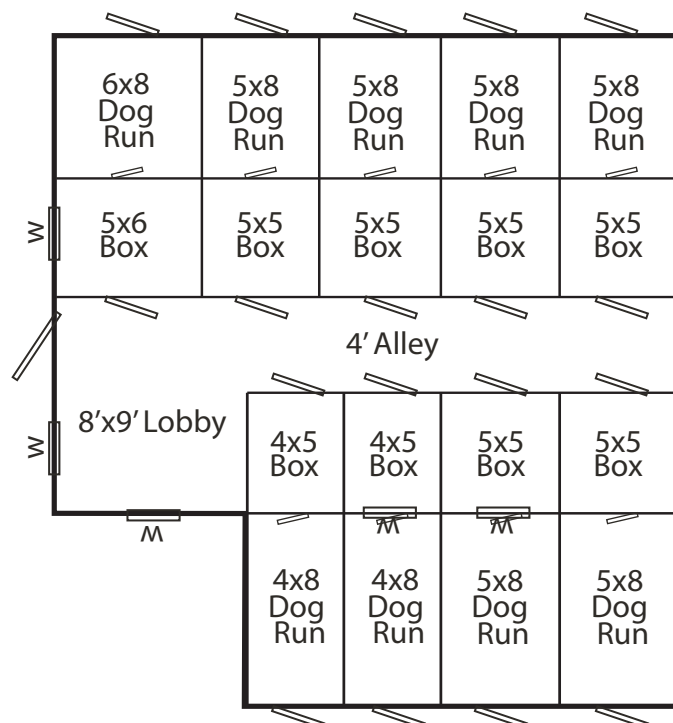
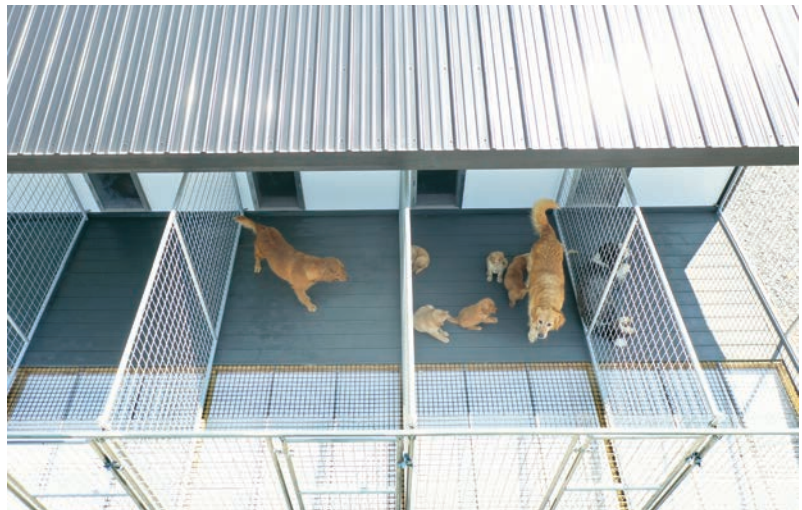
16" Exhaust Fan - best option for keeping fresh air moving through the kennel.

Lixit Water Lines - combining this feature with in-floor drains in the kennel boxes has been a huge hit.

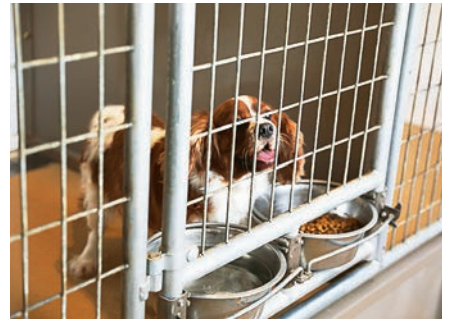
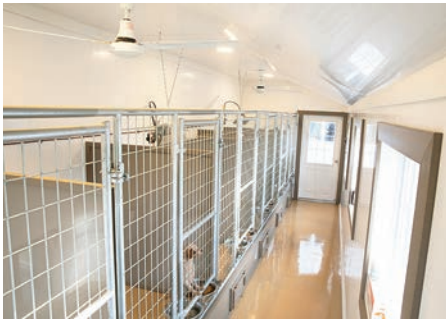
AC Unit - 10,000 BTU

Adaptability

We design our structures to adapt to your specific needs—whether it's layout, materials, or special features. We're here to help you create a setup that works for you and the dogs in your care.



We customize to fit your needs!



14'x 24' 6 Run

Clay Siding

Bronze Trim

Bronze Metal Roof

SHOWN WITH OPTIONAL:

Metal Siding

Metal Roof

Raised Floor

Tenderfoot Flooring

Exterior Wash Down

Interior Drain

16" Exhaust Fan

6 Ga. Welded Wire Panels

4' High Solid Dividers

Feed Bowl System

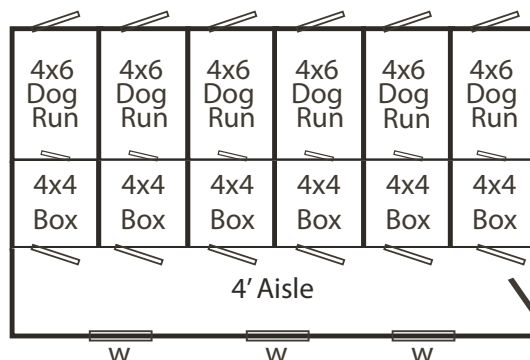
12v Light Package

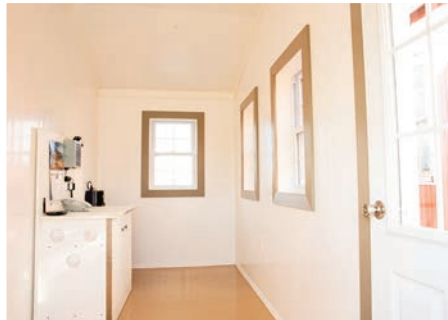
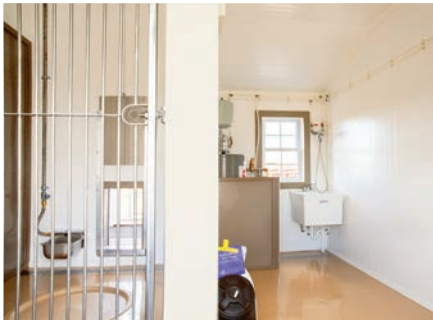
A-C Unit

36"x36" Slider Windows

20"x40" Slider Windows

9-Lite Pre-Hung Door





14'x34' 6 Run
w/5'x10' Lobby

Pearl Siding

Tan Trim

Bronze Metal Roof

SHOWN WITH OPTIONAL:

Vinyl Siding

Metal Roof

Radiant Floor Heat System

Whelping Nests

Wash Tub

Retractable Hose Reel W/Hose Bib

Shower Head W/Hose Bib

16" Exhaust Fan

56" Ceiling Fans

Solar System

Exterior Wash Down

Raised Floor

Tenderfoot Flooring

Guillotine Dog Doors

Auto Water Bowls

S.S. Feeders

S.S. Kennel Fronts

6-Ga. Welded-Wire Exterior Run

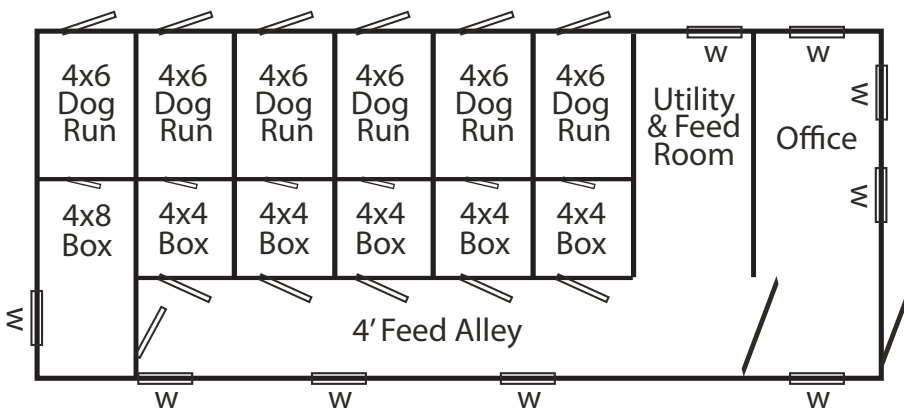
Fencing

9-Lite Pre-hung Door

Interior Drains

4' High Solid Dividers

Double Hung Windows



We customize to fit your needs!



12'x18' 3 Run

Navajo White Siding

Buckskin Trim

Walnut Brown Shingles

Standard Trim Package

SHOWN WITH OPTIONAL:

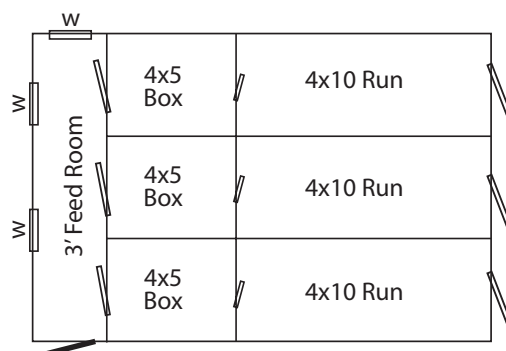
Red 9-Lite Pre-Hung Door

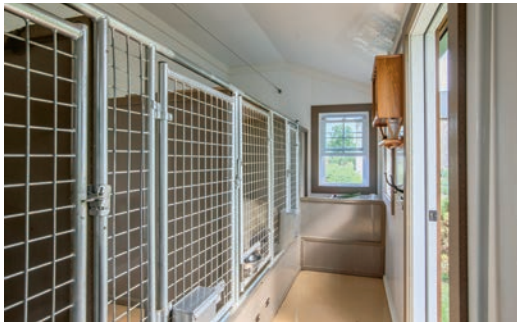
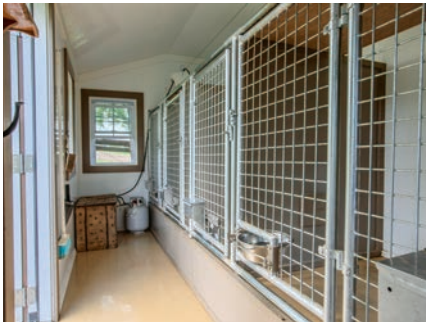
Welded Wire Panels

4' High Solid Dividers

Stainless Steel Channel Drain

24" Dog Doors





12'x17' 5 Run

Brown Cedar B&B Siding

Mushroom Stained Trim

Charcoal Shingles

Standard Trim Package

SHOWN WITH OPTIONAL:

Raised Kennel Floors

Pre-Hung Door

2 - 17x20 Deluxe Dog Doors

3 - 10x15 Deluxe Dog Doors

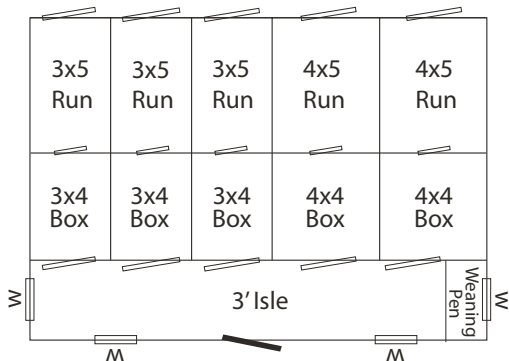
Stainless Steel Channel Drain

2"x2" welded wire panels

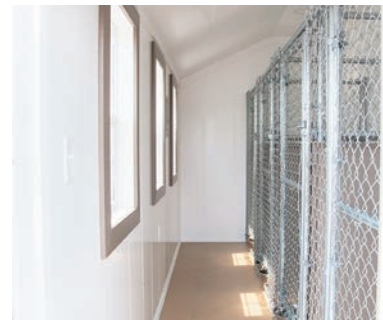
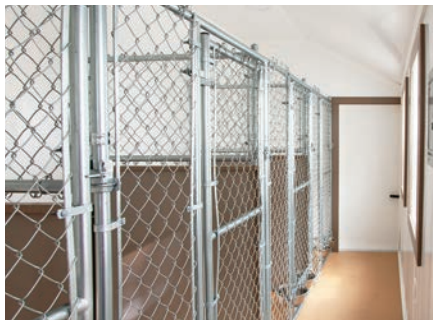
4' Interior Solid Divider Panels

18" Solid Divider for Puppy Pen

Black Rain Gutter System



We customize to fit your needs!



12'x16' 4 Run

Navajo White Siding

Buckskin Trim

Bronze Metal Roof

Standard Trim Package

SHOWN WITH OPTIONAL:

Metal Roof

Elite Gable Vents

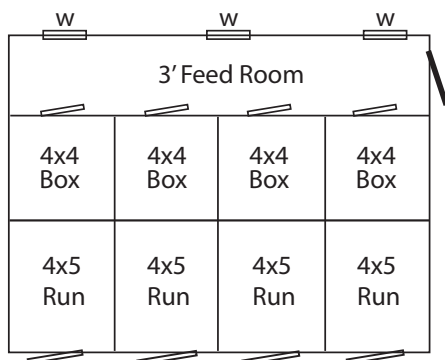
Slat Shutters

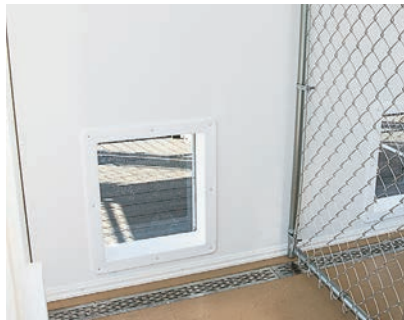
Feeder Bowls

Stainless Steel Channel Drain

4' High Solid Dividers

Electrical Package





10'x16' 4 Run

Hunter Green Siding

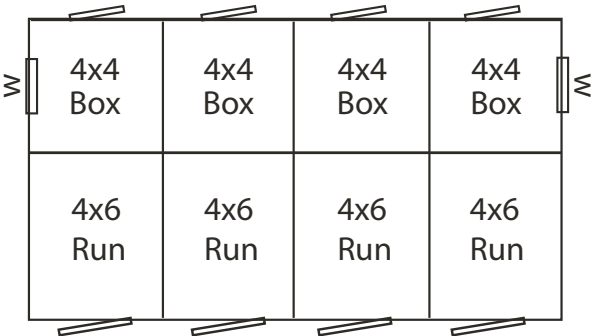
White Trim

Charcoal Shingle

Standard Trim Package

SHOWN WITH OPTIONAL:
Stainless Steel Channel Drain

Our smaller kennels offer a clean, comfortable setup that's perfect for backyard breeders or pet owners with multiple dogs. With quality materials and thoughtful design, they make daily care easier while providing a professional, well-organized space right at home.



We customize to fit your needs!



40 Run Kennel U Modular Design (2) 60'x14' (1) 69'x14'

Slate Blue Metal Siding
 Bright White Metal Trim
 Bright White Metal Roof
 4" Rain Gutter System
 4 Pre-Hung Entry Door
 21 - 24 x 36 Double Hung Windows
 6' 2"x4" 6 Ga. Welded Wire Fencing
 Guillotine Dog Doors
 17"x30" Deluxe Dog Doors
 Hot Water Boiler
 Interior Raised Floor
 Floor Drains in Feed Alley & Lobby
 Sloped Flooring in Kennels
 Stainless Steel w/GentleStep in boxes
 Interior Wash-down w/SS Spick Drain
 Lixit Nibble with adj bracket
 5 Retractable Hose Ports
 Wash Tub
 Washer/Dryer Hookup w/vent pipe
 Bathroom w/ vent
 Walls w/ R-20 Insulation
 Rafters w/R-38 Insulation
 Floor Joists w/R-30 Insulation
 Electrical Package - 28 lights, (every 6 ft)
 12 Receptacles, 10 Light switches
 Air Flow - (3)16" exhaust fans, (8) 56"
 ceiling fans, (2) 24,000 BTU mini splits (1)
 36,000 BTU mini split



Steps for the dogs to access the play area surround the entire inside perimeter of the u-shaped kennel.

Features On This Custom Built Kennel:

Gentle Step Flooring in Kennel - can be custom cut to provide areas to lay on, as well as diamond shape cutouts to allow for waste to fall through and easy wash-down.

Interior Raised Floor - Floors were raised 16 in, which makes caring for the dogs much easier! It also allowed for sloped flooring and a spick drain.

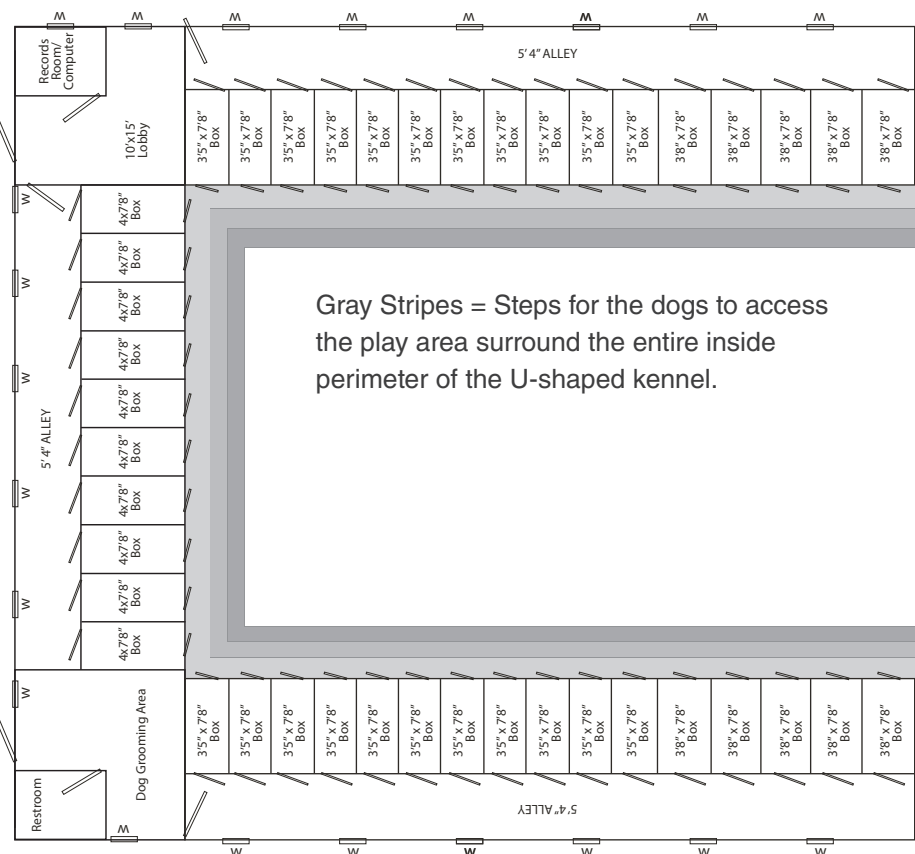
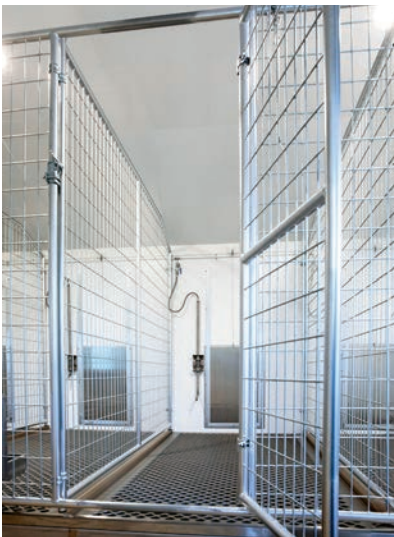
Washer/Dryer Hookup - This is a must for a large kennel, or boarding kennel. So much easier to keep everything clean.

Steps in Run area - This kennel was designed with steps for the dogs exiting by their dog doors, (see diagram) Inside the U shaped kennel is a large area for the dogs to play outside.

Insulation - We always insulate our kennels. This kennel has walls (R-20), rafters (R-38), and floor (R-30)

Restrooms - No more wasted time running to the house to use the restroom! This is a wonderful convenience!

Spick Drain - Under the Gentle Step flooring is an aluminum slanted floor which drains all wash down water, hair, and waste right out of the kennel! This is a huge time saver!



We customize to fit your needs!



20' x 60' 12 Run Kennel

Danville, Pa

Light Stone Metal Siding

Colonial Red Trim

White Metal Roof

8- 36x40 Double Hung Windows

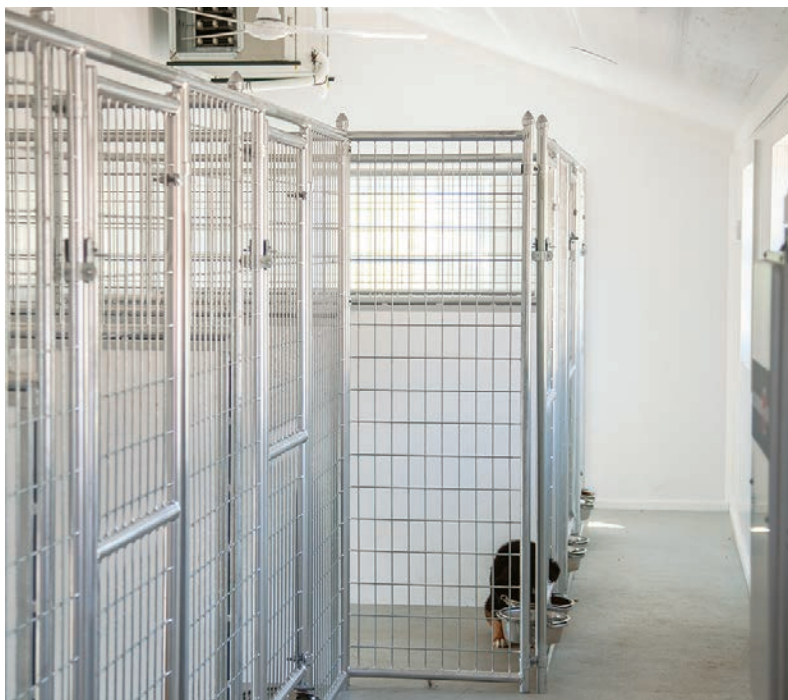
24" Dog Doors

On Demand Water Heater

Tan PVC Run Flooring

White Glassboard Run Wall

Welded Wire Fencing Panels



Peace of Mind Built In

Our kennels are designed with industry standards in mind, giving you confidence that requirements are being met—so when inspection day comes, it's far less stressful.

Features On This Custom Built Kennel:

Metal Roof - Our roofs are insulated, and have multiple layers including house wrap to give you superior long lasting protection

24" Dog Doors - w/ dual swing hinges & soft close. Easiest dog door to learn how to use! Ideal for boarding kennels & rescues

Pre-Hung 9-Lite Door - a draft free entry door is worth the upgrade!

Double Feeder Bowls - These can be installed in door or side panel of fencing, depending on preference - We build the panels to work for you.

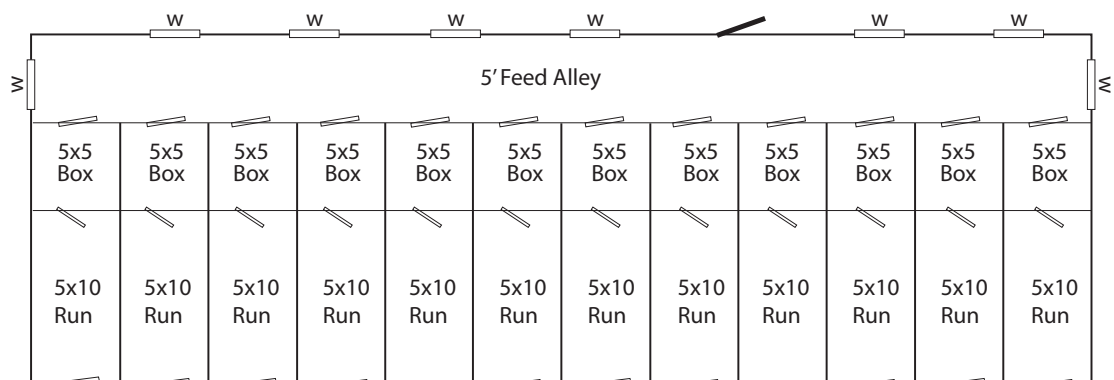
OnDemand Water Heater - Hot & cold water in the kennel is a wonderful thing!

40" Floor Drains - We highly recommend these in each kennel as well in all main areas

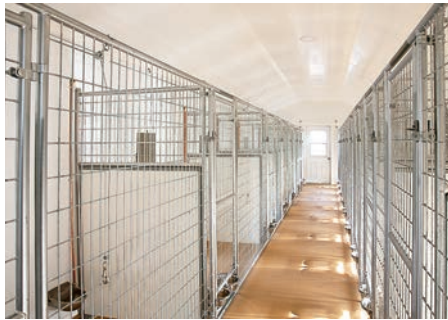
16" Exhaust Fan - best option for keeping fresh air moving through the kennel.

5' High Divider Panels w/Welded Wire Topper - Tall to prevent escape artists. The wire topper allows for more air movement.

Electrical Package - lights, temp control, whelping nests, and more - You need this.



We customize to fit your needs!

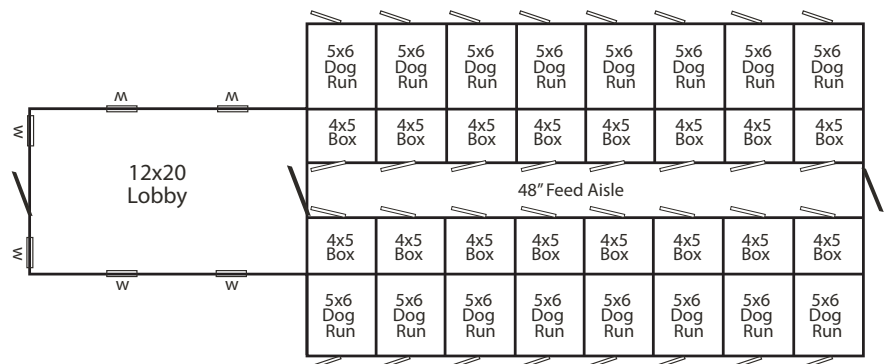


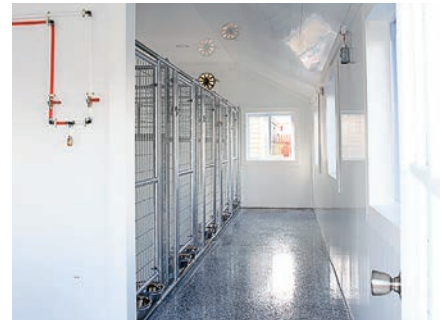
24'x60' 16 Run
w/12'x20' Lobby

Avocado Paint
Buckskin Trim
Bronze Metal Roof
Standard Trim Package

SHOWN WITH OPTIONAL:

Metal Roof
Welded Wire Panels
Drains
4' Solid Kennel Dividers
36"x36" Slider Windows
Guillotine Dog Doors
Stainless Steel Channel Drains
Stainless Steel Water Bowls
Sink
Hose Port
Vent Lite Pre-Hung Man Doors
Electrical Package



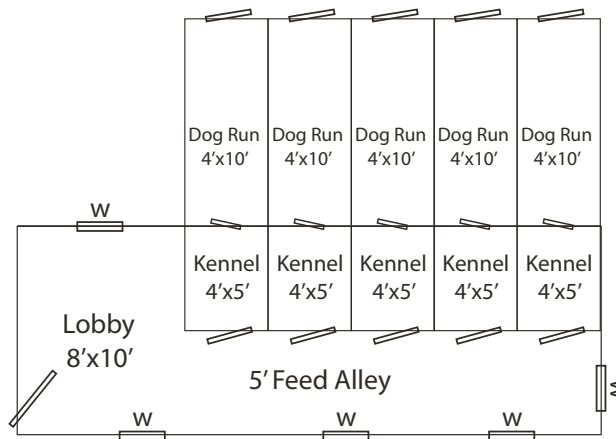


20' x 28' 5 Run
w/8'x10' Lobby

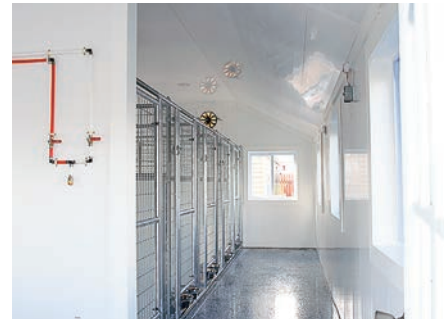
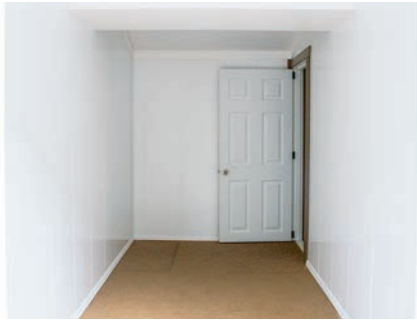
Light Stone Siding
Colonial Red Trim
Colonial Red Metal Roof
Standard Trim Package

SHOWN WITH OPTIONAL:

Metal Roof
Metal Siding
11-Lite Pre-hung Door
36"x36" Slider Windows
Elite Gable Vent
Exhaust Fan
Welded Wire Panels
4' High Solid Dividers
Feeder Bowls
Floor Heat System
Wash Tub
Hose Port
12v Light Package



We customize to fit your needs!

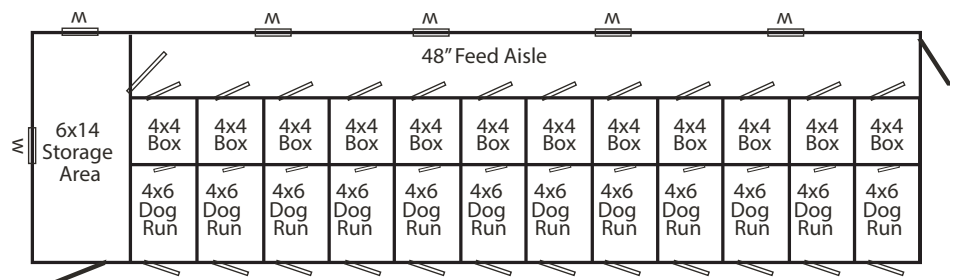


14'x54' 12 Run w/6'x14' Storage

White Siding
Dk Blue Trim
Gallery Blue Roof
Standard Trim Package

SHOWN WITH OPTIONAL:

Metal Roof
Poly Urea Run Floor
Stainless Steel Channel Drains
4' Solid Dividers
Welded Wire Panels
Guillotine Dog Doors
Exhaust Fans





14'x28' 7 Run

Lt. Gray Siding

White Trim

Charcoal Shingles

SHOWN WITH OPTIONAL:

Vinyl Siding

Happy Pet Kennel Fronts

S.S. Feeders

S.S. Lixit Nibbles w/ Bracket

Raised Floor

Exterior Wash Down

Tenderfoot Flooring

Interior Drain

Sink

Hose Port

L-P On-Demand Water Heater

L-P Wall Mount Room Heater

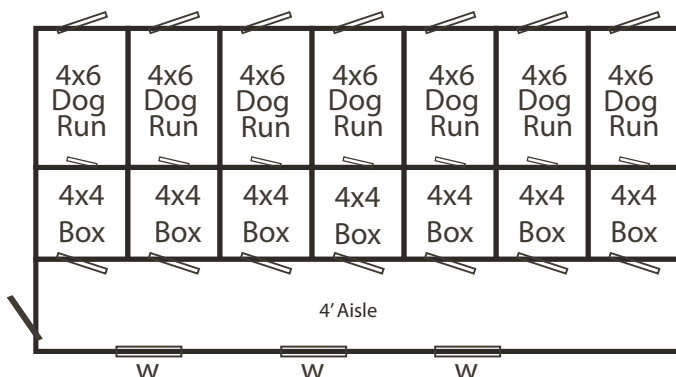
2 Gable Vents

6-Ga. Welded Wire Fencing

36"x36" Slider Windows

20"x40" Slider Windows

9-Lite Pre-Hung Door



We customize to fit your needs!



14' x30' 5 Run
w/10'x14' Lobby

Barn Red Siding

Black Trim

Black Metal Roof

SHOWN WITH OPTIONAL:

Metal Siding

Metal Roof

9 Lite Pre-Hung Door

36x36 Slider Windows

20x40 Slider Windows

Feed Bowl System

S.S. Feeders

Hose Port

Wash Tub

Interior Drain

Radiant Floor Heat

Whelping Nests

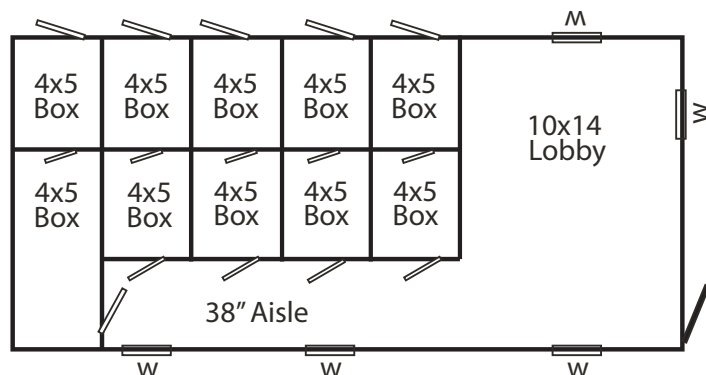
Mini Split Heat/AC Unit

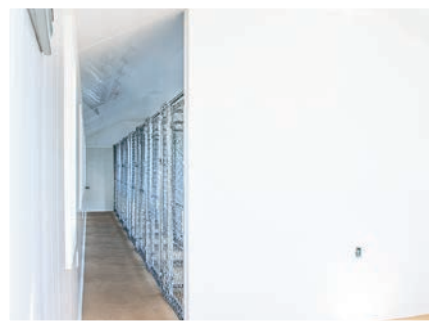
16" Exhaust Fan

4' High Solid Dividers

6-Gauge Welded-Wire Fencing

Electrical Package

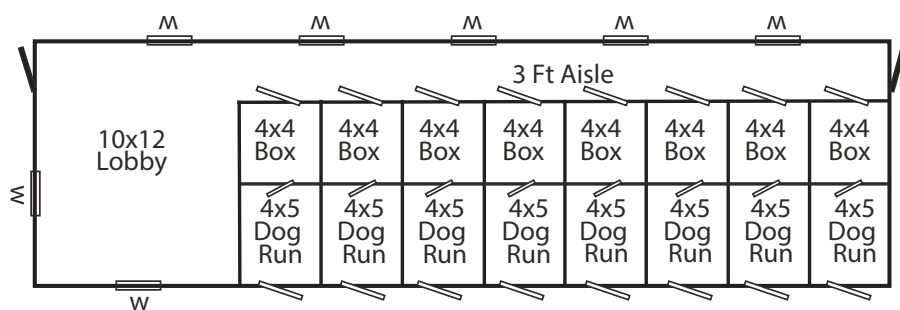




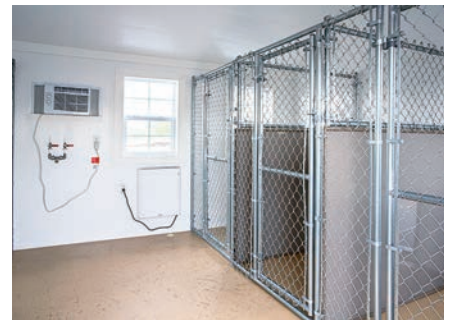
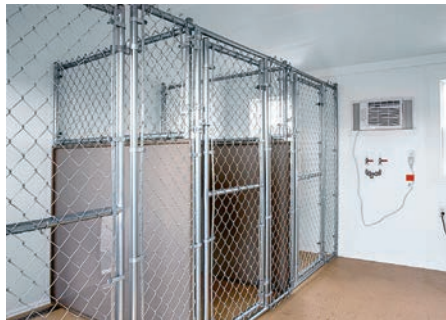
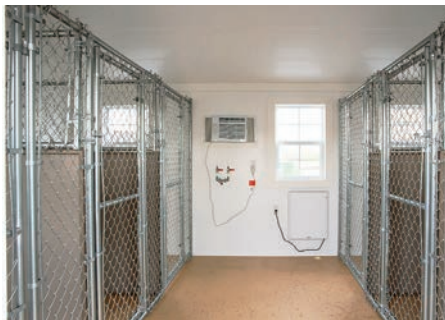
12'x 42' 8 Run
w/10'x12' Lobby
Light Gray Siding
Dark Gray Trim
Nickel Gray Shingles
Standard Trim Package

SHOWN WITH OPTIONAL:

2 A/C Units
Stainless Steel Channel Drain
Sink
Hose Port



We customize to fit your needs!



12'x 36' 6 Run

Dk Gray Siding

White Trim

Charcoal Shingles

Black Door

Standard Trim Package

SHOWN WITH OPTIONAL:

4' High Solid Dividers

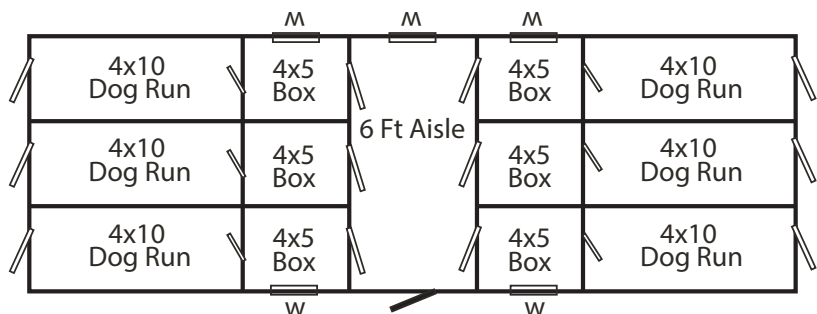
AC Unit

Envi Space Heater

Hose Port

Stainless Steel Channel Drain

Electrical Package





12'x32' 6 Run

Dk Gray Siding

White Trim

Charcoal Metal Roof

SHOWN WITH OPTIONAL:

Metal Roof

Deluxe Dog Doors

Guillotine Dog Doors

Pre-Hung 9-Lite Door

Feeder Bowl System

Hose Port

Sink

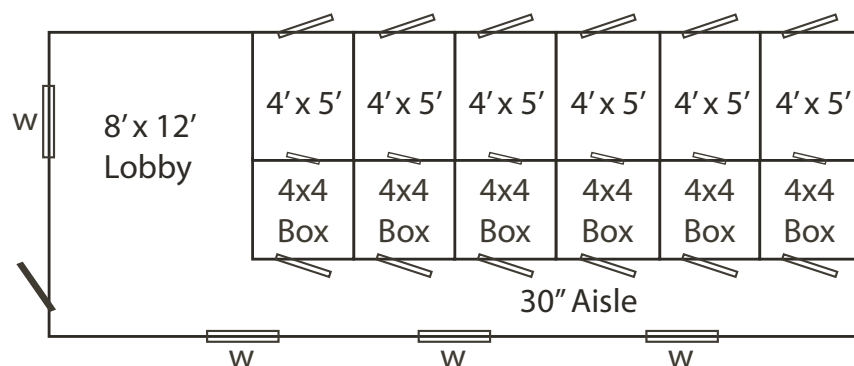
Interior Drain

16" Exhaust Fan

4' High Solid Kennel Dividers

Electrical Package

Exterior Entrance Light



We customize to fit your needs!



12'x 32' 8 Run

Chestnut Siding

Black Trim

Walnut Brown Shingles

Standard Trim Package

SHOWN WITH OPTIONAL:

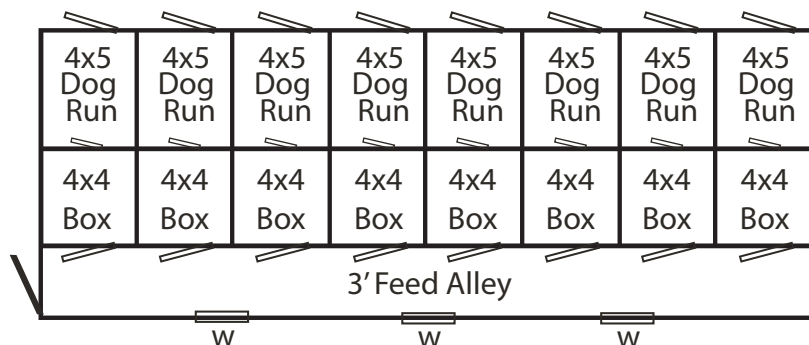
Guillotine Dog Doors

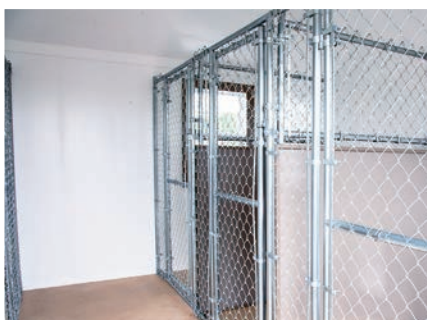
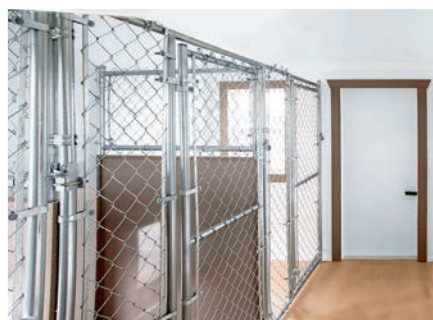
Stainless Steel Channel Drain

Wash Tub

Mini Split Heat/AC System

Electrical Package





12'x24' 6 Run

Lt. Gray Siding

Dk Gray Trim

Pewter Gray Metal Roof

Standard Trim Package

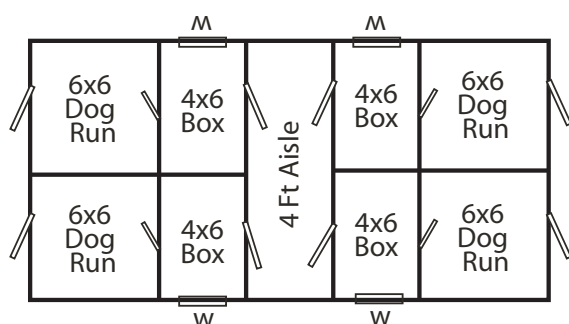
SHOWN WITH OPTIONAL:

Metal Roof

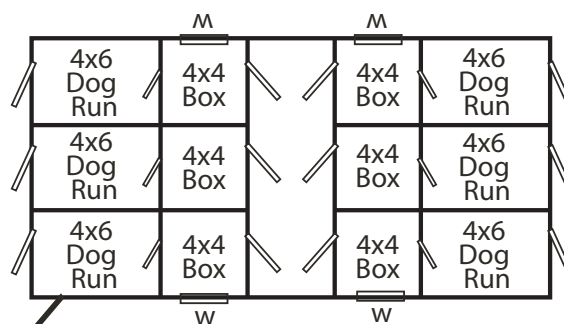
4' High Solid Dividers

Stainless Steel Channel Drain

Painted Door

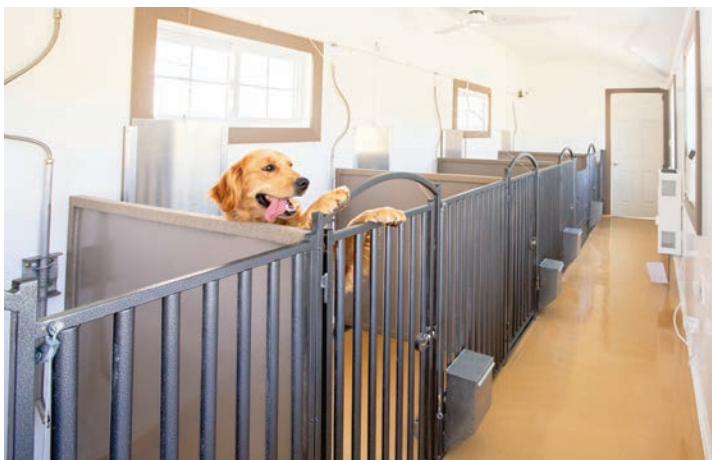


12x24 4-Run Layout



12x24 6-Run Layout

We customize to fit your needs!



The Spick Drain Explained



With the Spick Drain system, cleanup is quick and hassle-free. Just turn on the valves to start the water flow, pop off the covers, and spray everything



toward the drain. The sloped floor guides water and waste straight into the stainless steel Spick Drain, which is also angled for fast, efficient



drainage. From there, everything is carried out to the external waste line—leaving your kennel clean with minimal effort.

Customizable Features

to help you plan your kennel system

Standard kennel door width is 24". This can be changed as needed. Some doors swing 90° - other styles do not by default. If you need a certain direction for it to swing, or need it to swing only one direction, let us know.

Heavy-duty hinges and latches - while each style of fencing has a default latch style, if you have a preference for a certain style, talk to us. When at all possible, we will try our best to make it work. Latch height can also be customized.

Many of our feeders and some watering options need cutouts built into the fencing panels or doors. We have recommendations, but the decision is yours, just let us know what you prefer.

All panels, dividers, and fencing can be custom-sized to fit your space

Our team can help with taking measurements and layout planning, whether you are retrofitting for new panels, or just trying to plan the best way to make the most use of your space.

Powder-coating with many color options is available for most fencing panels, some at no up-charge.

Vinyl Coating is a very attractive option that is available for chainlink fencing.

Arched tops (upward or downward), with or without decorative finials are available for some fencing panel
Solid lower panels for puppy safety is available for all fencing panels

Norlock Panel dividers give each dog his own space and can reduce stress. These can be any height, and topped with any style fencing panel, to allow for better air movement and temp control.

Raised Flooring: This is a very popular feature that can be customized to your specs. You choose the height and materials used for flooring.

GentleStep Flooring can be added in kennel boxes, with slanted flooring below with a drain system. This makes the easiest and fastest wash down!

GentleStep flooring is customizable, you choose the size of the cutouts that work best for your dogs. Have part of the flooring solid, and part of it with cutouts to provide some space with solid footing and resting areas. This is also fully customizable.



Stainless Steel Kennel Fronts

Durable Construction: Made from 1" square tubing with 16 gauge wall thickness for the frame & bars are 3/8" solid round bars spaced at 2" o.c.

Stylish and Functional: The stainless steel is highly polished and smooth for a superior clean look.

Low Maintenance: Requires minimal upkeep and easy wash-down.

Doors: 24" doors swing 90 degrees out and are equipped with heavy-duty hinges and a bullet latch, shown below.

Custom Sizing: Panels can be tailored to fit any space or enclosure size. Call for help with measuring or any questions.

Powder Coating Available: Choose a powder-coated finish for enhanced appearance and protection.

Available Options:

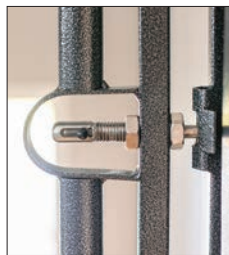
Upward arches with or without finials above the doors, downward arches, solid lower panels to keep small puppies contained in the whelping area, and feeder cutouts. We are constantly adding and upgrading our options, please call to discuss your needs.



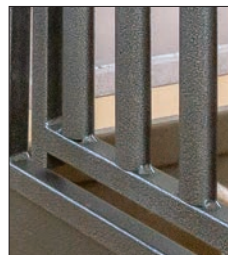
Optional Arches With Finials Above Doors



Stainless Steel Panels Standard Hinge



Stainless Steel Panels Standard Bullet Latch



Oval Bars For Added Strength On PC SS Panels



Solid Lower Panel For Small Puppies



Downward Arch Top

Powder Coated Stainless Steel Kennel Fronts & Dividers

Durable Construction: Made from 1" square tubing with 16 gauge wall thickness for the frame & bars are 7/8" oval bars spaced at 3" o.c.

Stylish and Functional: A very solid panel that's economical and long lasting with the powder coating

Low Maintenance: Requires minimal upkeep and easy wash-down.

Doors: 24" doors swing 90 degrees out and are equipped with heavy-duty hinges and a bullet latch, shown below.

Custom Sizing: Panels can be tailored to fit any space or enclosure size. Call for help with measuring or any questions.

Powder Coated: Choose a powder-coated finish color

Available Options:

Upward arches with or without finials above the doors, downward arches, solid lower panels to keep small puppies contained in the whelping area, and feeder cutouts. We are constantly adding and upgrading our options, please call to discuss your needs.

Note:

Powder Coated Kennel Fronts are designed with oval bars, while non-powder coated Stainless Steel Kennel fronts are as shown on facing page.



Aluminum Fencing Panels

Durable Construction: Made from 1" square tubing with 1 1/8" wall thickness for long-lasting strength.

Stylish and Functional: Designed with 1/2" O.C. vertical spokes 2" on-center and horizontal supports every 2' for a sleek look and reliable structure.

Low Maintenance: Requires minimal upkeep, easy wash-down, making it a great option for pet enclosures.

Doors: 24" doors swing 90 degrees both in and out for easy access, equipped with heavy-duty hinges.

Custom Sizing: Panels can be tailored to fit any space or enclosure size. Call for help with measuring or any questions.

Powder Coating Available: Choose a powder-coated finish for enhanced appearance and protection, at no up-charge.

Dog Bowls: Choose from several options and have your panel built to accommodate feeding and watering.



Our fencing panels are fully customized to your needs. To ensure the perfect fit, we recommend calling to discuss options and measurements. We offer honest advice based on our experience and customer feedback, with no pressure or unnecessary up-selling.



Aluminum Panels Standard Hinge



Aluminum Panel Standard RVW Latch

Powder Coated Aluminum Fencing Panels

The powder-coated panels offer the same great features as the aluminum panels above, with the added benefits of a durable, attractive powder-coated finish. Available in a variety of colors, these panels not only enhance the appearance but also add extra protection. Call today to explore color options and find the perfect fencing panels for your needs!



Shown are 3 popular colors of the many color/texture options for Powder Coating



PC Aluminum

We customize to fit your needs!

Welded Wire Kennel Panels 2"x4"

Durable Construction: Made from 14Ga galvanized tubing. Perimeter tubing is 1.315 O.C. Welded wire is spaced at 2"x 4" intervals with hot-dipped galvanized wire. All welds are sprayed with cold galvanized paint. Very durable if properly maintained.

Maintenance: Conduct regular inspections of the welded wire mesh and address any signs of damage or wear promptly. Applying rust-resistant paint or coatings as needed can help protect the mesh from the elements.

Doors: 24" doors swing 90 degrees both in and out for easy access, equipped with welded on hinges, and bolt on butterfly latches.

Custom Sizing: Panels can be tailored to fit any space or enclosure size. Call for help with measuring or any questions.

Dog Bowls: Choose from several options and have your panel built to accommodate feeding and watering.



Options

Everyone has preferences for how they want their kennel to work for them. What works for one, isn't preferred by another. That's why we try to have many options available, as well as customization for many of our products. Call us to discuss your needs. We would love to help you!



Standard Butterfly Latch



Welded on Hinges

Welded Wire Kennel Panels 2"x2"

Durable Construction: Made from 14Ga galvanized tubing. Perimeter tubing is 1.315 O.C. Welded wire is spaced at 2"x2" intervals with hot-dipped galvanized wire. All welds are sprayed with cold galvanized paint. Very durable if properly maintained.

Maintenance: Conduct regular inspections of the welded wire mesh and address any signs of damage or wear promptly. Applying rust-resistant paint or coatings as needed can help protect the mesh from the elements

Doors: 24" doors swing 90 degrees both in and out for easy access, equipped with welded on hinges, and bolt on butterfly latches.

Custom Sizing: Panels can be tailored to fit any space or enclosure size. Call for help with measuring or any questions.

Dog Bowls: Choose from several options and have your panel built to accommodate feeding and watering



Welded Wire



Our fencing panels are fully customized to your needs. To ensure the perfect fit, we recommend calling to discuss options and measurements. We offer honest advice based on our experience and customer feedback, with no pressure or unnecessary upselling.

We customize to fit your needs!

Chainlink Kennel Fencing Panels

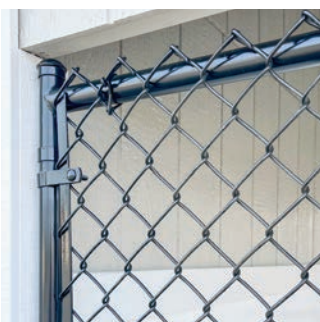
Durable Construction: Made from 1.315in, 16 Ga galvanized tubing with .065 thickness. Standard Chain link is made 11.5, 2.25" mesh with two coats of paint. First coat is cold galvanized paint with a top coat of metallic silver. For large aggressive dogs we recommend upgrading to our 9Ga. mesh.

Maintenance: Low maintenance

Doors: 24" doors swing 90 degrees both in and out for easy access, equipped with welded on hinges, and bolt on butterfly latches.

Custom Sizing: Panels can be tailored to fit any space or enclosure size. Call for help with measuring or any questions.

Dog Bowls: Choose from several options and have your panel built to accommodate feeding and watering



Vinyl Coating



Standard Butterfly Latch



Hinges



Stainless Steel Framed - Glass Kennel Fronts

These glass kennel fronts are perfect for medical facilities, as well as boarding kennels. While allowing airflow at the top, there is much less risk of cross contamination, while still allowing full observation.

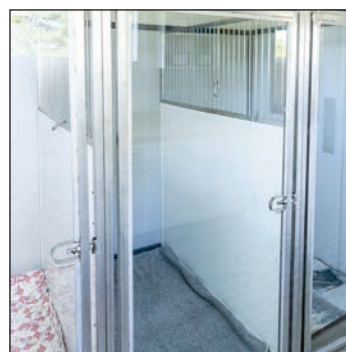
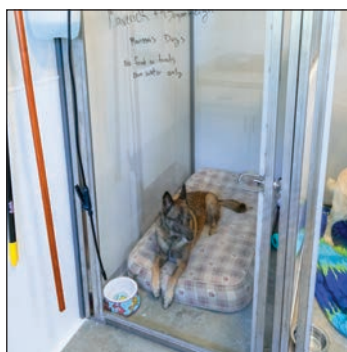
The thick double pane glass panels are reinforced with stainless steel frames. Comes with a bullet latch for secure closure.

Front side panels also available for wider kennel spaces. (Shown with Norlock Divider Panels, with stainless steel panel on top for extra security.

Glass Front



Our fencing panels are fully customized to your needs. To ensure the perfect fit, we recommend calling to discuss options and measurements. We offer honest advice based on our experience and customer feedback, with no pressure or unnecessary upselling.



We customize to fit your needs!



Happy Pet Kennel Systems

A beautiful solution that makes caring for small breeds easier. Tall panels are also available for larger breeds.

Durable Construction: Made from durable plastic poly

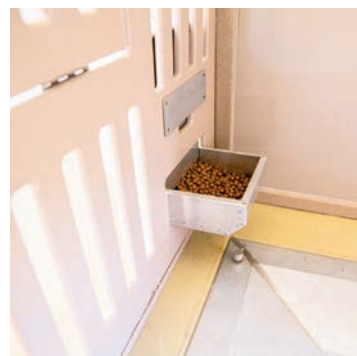
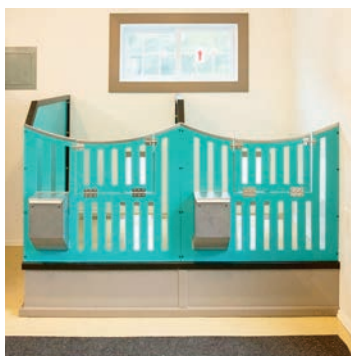
Maintenance: Low maintenance, easy wash down

Doors: Several options on door design. Can swing out, or hinge down to lay flat.

Custom Sizing: Panels can be tailored to fit any space or enclosure size. Call for help with measuring or any questions.

Dog Bowls: Choose from several options and have your panel built to accommodate feeding and watering

Colors: Cream, Turquoise, Weatherwood, Gray and Raspberry.



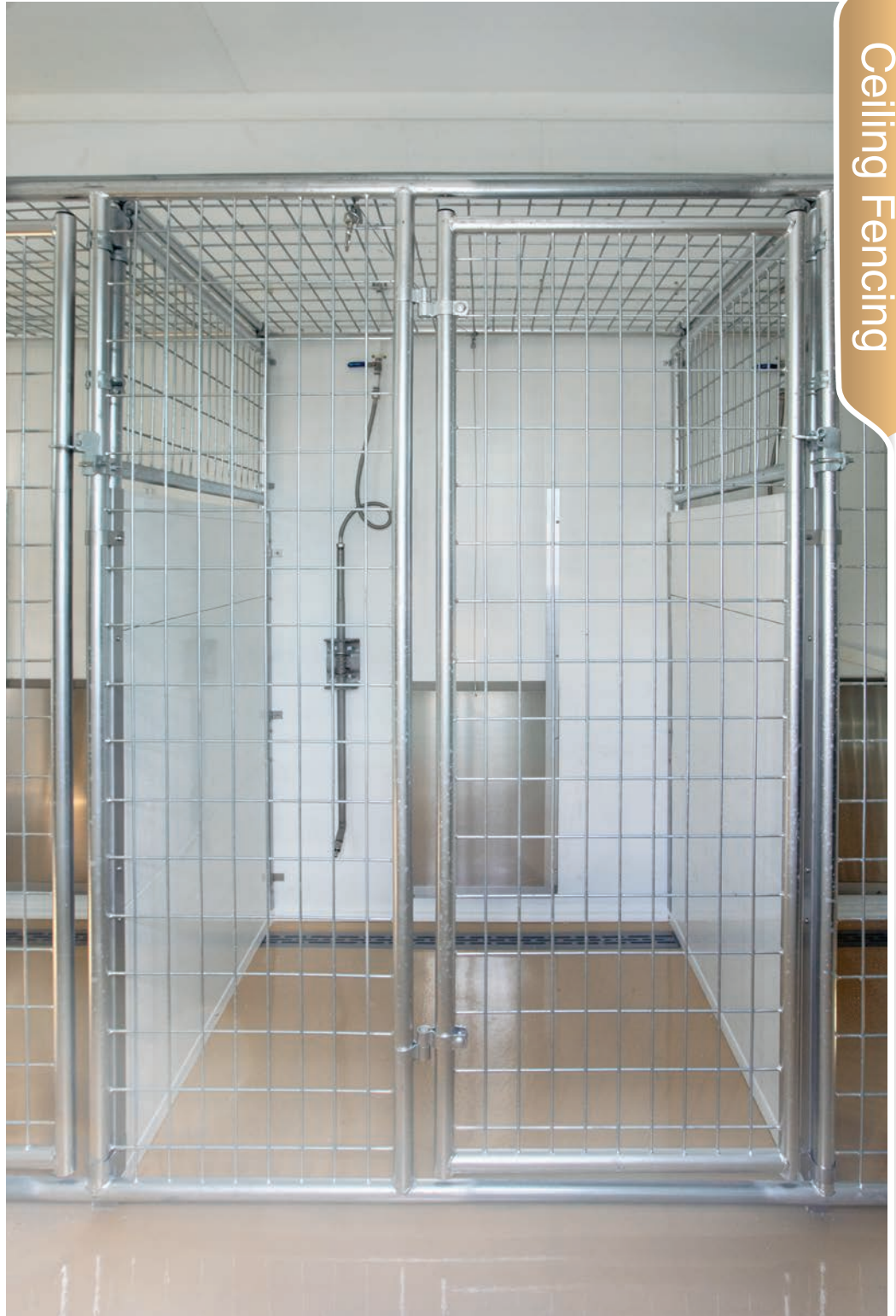
Welded Wire Kennel Box Ceiling

Security: adding a welded wire ceiling to your kennel box prevents dogs who can climb and jump from escaping.

It also adds security in keeping other animals which can climb getting in.

When theft is a concern, this adds another level of security.

Ventilation: welded wire allows full air circulation, which reduced odors and helps regulate temperatures.



Norlock® Kennel Dividers/Panels

Superior Strength: Built to handle heavy-duty use and withstand impact. Able to structurally support heavy items directly affixed

Easy to Clean: Non-porous, smooth surface makes cleaning quick and simple.

Low Maintenance: Resistant to wear and tear, requiring minimal upkeep. UV stabilizers prevent discoloring and cracking

Heavy-Duty: Engineered to withstand demanding environments like dog kennels. No external support necessary.

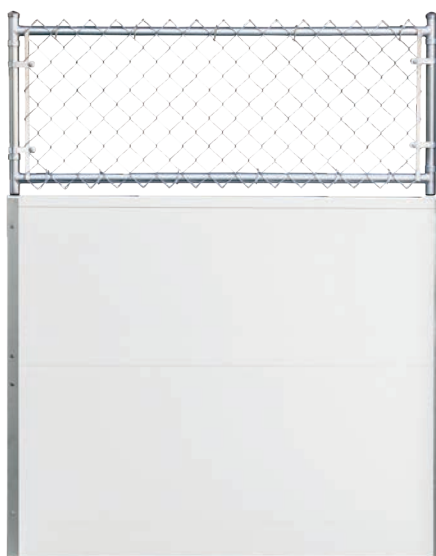
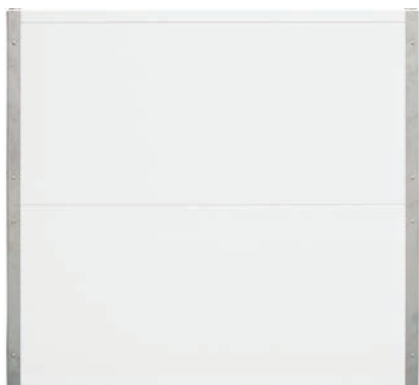
Versatile: Openings can be cut directly into NorLock

Environmentally Sustainable: 100% recyclable

Made In Canada

Available in White or Gray - Our fencing panels are fully customized to your needs. To ensure the perfect fit, we recommend calling to discuss options and measurements.

NorLock by Trusscore divider panels are the perfect solution for creating strong, low-maintenance partitions in dog kennels. Designed to handle heavy use, these durable planks are easy to clean, abuse-resistant, and can even support items fastened directly to them.



Norlock Interlocking Panels Shown in White



Norlock Interlocking panels shown in Gray



Norlock Interlocking Panels Shown in White

Kennel Run Ceilings

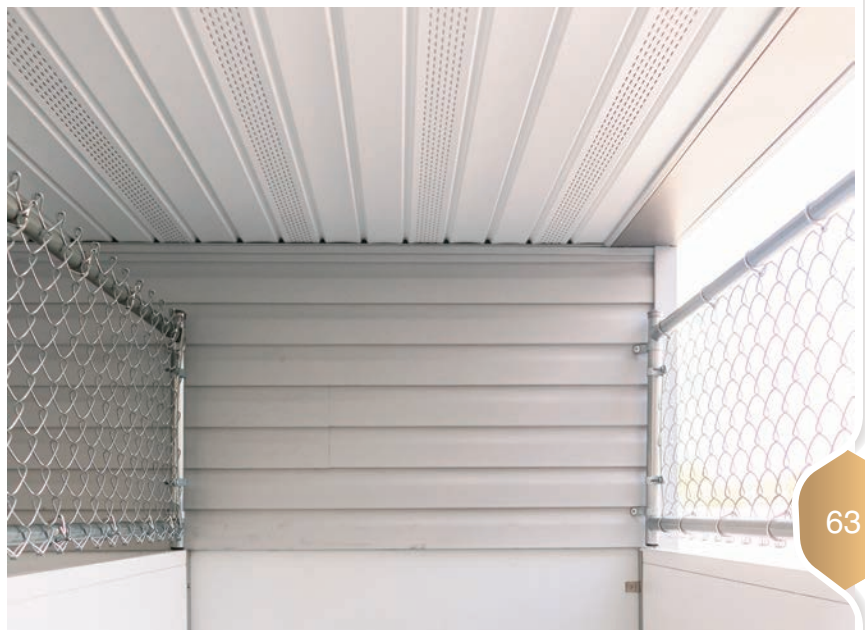
- Duratemp makes a very long lasting and easy to clean solution
- Shield your dogs from rain, snow, hail and direct sun
- Keep their outside space accessible to them at all times.
- Reduces the risk of heat stroke.
- Keeps mud, standing water and snow out of dog runs
- Protects your run flooring - making it last much longer
- Sets your kennel and dog care at a higher level - impressing clients and showing your commitment to animal welfare
- Staff can clean, and interact with the dogs in all weather.
- Can also be built with vinyl ceiling soffit as shown in bottom pic. Less cost, but can be time consuming to keep clean.

Customization

If you have an idea for a feature you want in your kennel, but aren't seeing it here, please give us a call! We would love to collaborate and discuss your project!



Run Ceiling





INTERIOR RAISED FLOOR



EXTERIOR RAISED FLOOR

The Raised Floor Option Enables You to Use a Wire Run Floor With a Wash Down Underneath for Cleaner Kennels, and Also Allows for Heat Under the Indoor Kennels for Whelping.

Exterior Wash Down Drain

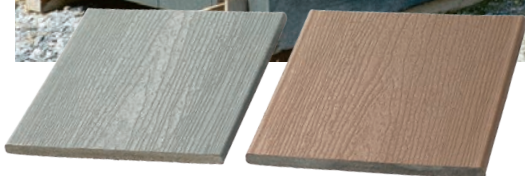


EXTERIOR WASH DOWN
Requires Raised Floors Inside and Out.

Composite Decking



Skirting 1/2" x 12" x 12'

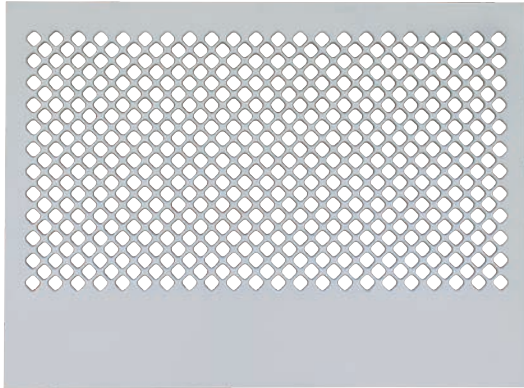


Adaptability

We design our structures to adapt to your specific needs—whether it's layout, materials, or special features. We're here to help you create a setup that works for you and the dogs in your care.

GentleStep Kennel Flooring

This kennel flooring is made from King's Starboard and is designed for maximum durability and heavy-duty use, ensuring long-lasting performance. Customization options allow you to tailor the design to your specific needs. You can choose the proportion of the surface you wish to have holes versus solid areas, and the size of the holes is fully customizable to work best for the size of your dogs. Custom sizes available.



GentleStep Kennel Flooring



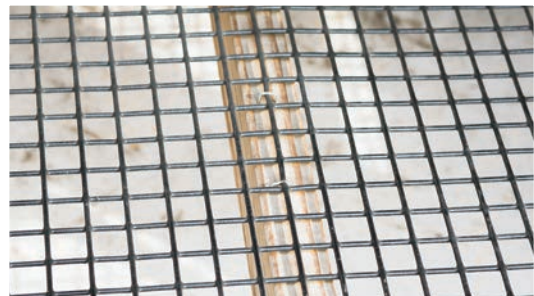
Versa Pad Flooring

Great Option for Exterior Kennel Runs for small dogs. This is a snap together product, so there are cracks where the pieces come together. VersaPad flooring comes in one size sheet and one size hole, no customization available. This is a lightweight product and only recommended for small breed dogs.



Black Coated Run Wire

Heavy Gauge Black Coated Wire
For Run Floors



We customize to fit your needs!

BEST DESIGN!

Canine Dog Door

w/ Dual Swing Hinges
& Soft Close

Easiest Dog Door for dogs to learn how to use!
Both directions just need a nudge.

Ideal for boarding kennels, rescues & hospitals

Stronger - heavy duty built

2 year warranty!

All parts are individually replaceable

Quiet - lower the noise level and stress with a quiet closing door



Deluxe Dog Doors *2- Way Hinge

Easy Dog Door for dogs to learn how to use! Both directions just need a nudge.

Noise Level: This door is not a quiet close door, we recommend adding a Kwiet Close to reduce noise induced stress levels



Canine Dog Door

w/soft close
(Plexiglas)

Allows Light In Kennel The translucent panel allows a soft light into the kennel area
Durable - heavy duty built

Opens: Dog bumps it open when exiting & uses the flange to nudge it open when entering
Quiet - lower the noise level and stress with a quiet closing door



Pet Safe Dog Door

Allows Light In Kennel The translucent panel allows a soft light into the kennel area

Durable - Aluminum Frame with flexible flap which is attached at the top

Opens: Dog nudges the flap which is secured in place with a magnetic strip at the bottom.

Noise Level: no noise
Replacement flaps available



Plexiglas Dog Door

Allows Light In Kennel
The translucent panel allows a soft light into the kennel area
Durable - heavy duty built
Opens: Dog bumps it open when exiting & uses the flange to nudge it open when entering

Noise Level: Not a quiet close door, we recommend adding a Kwiet Close to reduce noise-induced stress levels



Aluminum Dog Door

Solid Aluminum Panel
Does not allow light in kennel
Durable - heavy duty built
Opens: Dog bumps it open when exiting & uses the flange to nudge it open when entering

Noise Level: Not a quiet close door, we recommend adding a Kwiet Close to reduce noise induced stress levels



All Trim Kits Come With All Hardware Needed for Installation

Guillotine Dog Door

*Manual Open/Close

If you need to lock your dogs in at night, or keep them out while cleaning, this is the door for you. Aluminum slides and door, uses a pulley with a metal cable and door snap latch to secure door at desired location.



The snap secures at front of kennel panel for easy access



Plastic Molded Dog Hole Trim

Accommodates wall thickness anywhere from 3.5" to 6". Available in white or weatherwood.



Stainless Steel Adjustable Trim Kits

Available in 2 wall thickness sizes.
4.5"-8.5" Wall, 8.5"-10" Wall



Plastic Molded Adjustable Extra Deep Dog Hole Trim

Accommodates wall thickness 3" - 12". Can be trimmed for depths less than 9.5". Available in weatherwood only.



Dog Door Accessories

Kwiet Klose

Cut the Noise and reduce the stress on your dogs! A great solution for keeping the whelping area quiet. Attaches to door trim and keeps dog doors from slamming.



Trainer Door Stop

For use on deluxe and plexi door. Keeps the door ajar just a bit to help dog learn how to open door.



Dog Door Locks

Installs in door trim to allow you to lock your dogs in or out.



(shown installed in door)

We customize to fit your needs!

6-Panel Pre-Hung Entry Door

Gives you a draft free man door.



6-Panel Pre-Hung Entry Door

Gives you a draft free man door.



11-lite Window

Fixed Window - Compatible with the door shown above.



Vent Window

Functional Window. Compatible with the door shown above.



9-lite Window

Fixed Window. Compatible with the door shown above.



36" x 36" Slider Window

w/Full Screen, Grids,
and Low-E



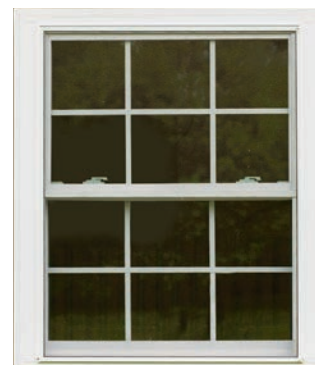
24" x 36" Double Hung Window

w/ Full Screen, Grids, &
Low-E



34" x 40" Double Hung Window

w/Full Screen, Grids, & Low-E



20" x 40" Slider Window

w/Full Screen, Grids,
and Low-E



Octagon Window

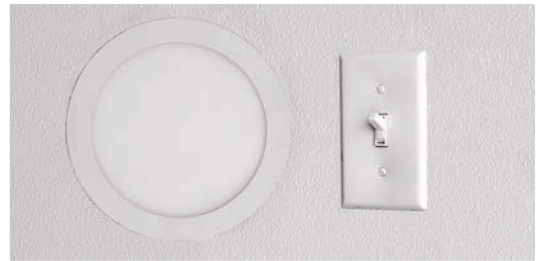
Low-E





ELECTRICAL PACKAGE INCLUDES:

- 1 Light
- 1 Receptacle
- 1 Light Switch
- Electrical Box
- More Lights and Receptacles Can be Added



12 VOLT LIGHT PACKAGE Includes:

- 1 Light • 1 Light Switch
- More Lights Can be Added



EXTERIOR ENTRANCE LIGHTS



EXTERIOR RUN LIGHTS



TRIPLE BULB VANITY LIGHT



EXTERIOR FLOOD LIGHTS DOUBLE BULB



DISCONNECT BOX



ELECTRICAL BOX

Built-In EZS Sloped Bottom Whelping Bed

EZS whelping bed shown with or without safety rails. Available in electric or hot water. Choose rail and heat source preference.



EZS Piggy Rails

EZS piggy rails, are used to protect the puppies should mom roll over and accidentally smother her babies. When puppies are of sufficient size and strength, rails can be removed to increase the size of the internal whelping box space.



These Rails fit the built-in EZS Whelping nests as well as the Portable nests



#108 Accu Temp Whelping Nest Shown Above

Electric Or Propane EZS Portable Whelping Box w/Safety Rails

Thermostat Controlled

Volts 120

Amps 1.25

Watts 150



- Made of medical-grade material with an antimicrobial additive that is chemical and water-resistant.
- Controlled with a digital adjustable thermostat controller.
- Digital display shows the internal temperature of the unit.
- Maintains a constant warm temperature to maintain the puppies' body temperature to reduce loss of body heat and reduce the mortality of newborn puppies.

EZS Trim Kits

The trim kit replaces the top rail of the whelping box once the puppies are old enough to crawl out of the box, and lets them get back into the box.



Accu Temp Whelping Nest



Keep your puppies cozy and comfortable with a temperature controlled whelping pad.

Save More Puppies - Without The Stress

Accu Temp whelping nests are the key to successfully raising puppies. Studies show that keeping the temp consistently warm is very critical in the first two weeks of a puppy's life. With Accu Temp whelping nests you can do just that with ease and peace of mind. The built in sensor and the user friendly digital thermostat gives you finger tip control over the temp. They can be used with hot water, electric or the Accu-Temp whelping heater.

Single Zone Whelping Nest Control Box

Compatible with Electric Accutemp Whelping Nests.



Digital Temperature Controller

If one of your controllers goes bad in your control box, here is a replacement.



CUSTOM CONTROL BOXES AVAILABLE!

Electronic Whelper Control Box

Compatible with Accu Temp Whelping Nest or EZS Whelping Beds that use electricity, not hot water



Hot Water - Whelping Control Box

Compatible with Hot Water Accu Temp Whelping Nest or EZS Hot Water Whelping Beds



Radiant Floor Heat System

The Ultimate Heating Source for Your New Kennel - Efficient and Extremely Convenient!

- Consistent, Gentle Warmth
- Dry Surfaces - Wet Evaporates Quickly
- Fast Drying Surfaces Means Less Microbial Growth, Improving Health And Smell
- Faster Cleaning Time
- Eliminates Need For Heaters And Reduces Fire Risk



7 lb Stainless Steel Feeder w/Lid

Our best selling feeder! Basically indestructible and will last many years.

BEST SELLER!

Standard Bracket for 7 lb. & 4lb feeder (Included)



4 lb Stainless Steel Feeder



Spring Loaded SS Feeder Bracket

Optional Spring Loaded Quick Release Bracket for 7 lb or 4Lb S.S. Feeder



Stainless Steel Bowl w/Bracket

It's a great feed & water dish to use in puppy weaning cages.



Inside Kennel



Outside Kennel

Stainless Steel 3 Qt Bowl Bracket



Use with chain-link or welded-wire kennel fronts. Keeps your food and water bowls secure while allowing you to remove them with ease, without opening the door. Available in single or double.

Wall Mount Stainless Steel Bracket w/ Bowl



Dish drops in with spring holding it tight. Includes bowl and hardware for mounting.

Snappy Fit Dog Bowl

- Stainless steel water and feed bowl with patented bracket that locks and holds bowl in place and allows for easy removal.
- It cannot be tipped sideways or dislodged from underneath.



Stainless Steel Flat Sided Water Bucket w/ Hooks



Adjustable Water Nibble Bracket

Easily adjust your water nibble to a desired height. Includes 30" (above bracket) metal pipe with threads for connecting to supply line and to water nibble



L-70 Lixit Water Nibble

Eliminate contaminated water bowls and keep clean/fresh water there at all times.



Adjustable K9 Aqua Fountain Bracket

Eliminate contaminated water bowls or wet pens with this in-wall fixture for L70 Lixit water nipples. Features drip tray with built-in drain. Rugged, stainless steel construction. 12" of height adjustability. Total size: 6.75"wx21"h
L70 Lixit Water Nibble not included.



Auto Plastic Molded Water Bowl w/Float

Auto plastic molded water bowl with stainless edging to resist chewing (Bowl detaches for ease of cleaning) Shuts off with 9 ounces of water.



Non-Adjustable K9 Aqua Fountain Bracket

Eliminate contaminated water bowls or wet pens with this in-wall fixture for L70 Lixit water nipples. Features drip tray with built-in drain. Rugged, stainless steel construction. Total size: 6.5"Wx5"H
L70 Lixit Water Nibble not included.



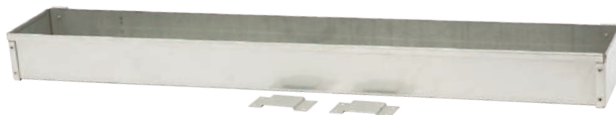
Auto Stainless Steel Water Bowl w/Float

Large Capacity! Holds up to 3.5 quarts. Recommended for medium to large breeds. Bowl detaches from float in seconds by loosening 2 inset screws with screw driver. Includes hardware for wall mount or pole mount, and 12 in. supply line hose



30" Stainless Steel Puppy Trough

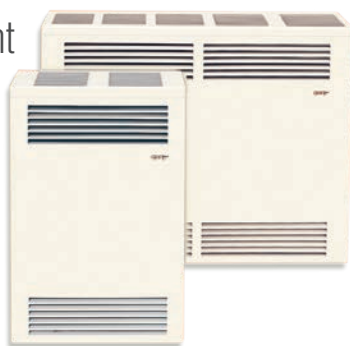
Gives your whole litter access to food at the same time.



We customize to fit your needs!

Lp Cozy Direct Vent Wall Furnace

Blower Kit Also Available
14,000 or 33,000 BTU



LP Procom Wall Mount Thermostat Heater

10,000 BTU



130-Pint Waykar Commercial and Industrial Dehumidifier

Includes washable filter and
3.28 ft drain hose



110-V Horticat Humidifier

- Includes filter
- 80 pint per day
- Direct connect water line



16" Electric Exhaust Fan w/ Gable Shutters

16" 110-V Exhaust Fan
w/Aluminum Gable Shutters
1900 CFM 1.35 AMPs
With Percentage Timer



Percentage Timer

Compatible with 110-v
exhaust fan.

#1 SELLER FOR AIR
EXCHANGE SYSTEMS



56" Electric Ceiling Fan



CFM 27,000 / Volts 120 / Amps .83 / Watts 100

Ceiling Fan Control

Reversible and variable speed
switch for 56" ceiling fan.



Heat/ AC Unit

We Will Install the Recommended Size Unit According to the Square Footage of the Building.

Requires 220v 20 AMP Circuit



Interior View



Exterior View

Mini Split Heater/AC Unit

12,000 BTU Unit Requires 110-V A-C

24,000 BTU Unit Requires 220-V A-C

Low Temp Units Available for Colder Climates



Interior View



Exterior View

PECO Greenhouse Thermostat

- Weather Resistant
- Corrosion Resistant
- UL Listed
- CSA Certified
- Heating or Cooling
- 40°F - 110° Temp Range
- 16Amp/110V, 12Amp/220V



LP Regulator

Used for LP Water Heaters
See p. 74



Pigtail

When you want a simple option to run electric to the kennel



Model #202 L-P EZ Tankless Water Heater

No electric needed.
4.1 gallon per min.
@ 35° temp rise.
Ignition requires two
D cell batteries.



30 gal LP Water Heater



Marey Electric Tankless Water Heater

3 gallon per min.
@ 35° temp rise.

Volts 220
Amps 45.8
Watts 10,076



30 Gal Electric Water Heater

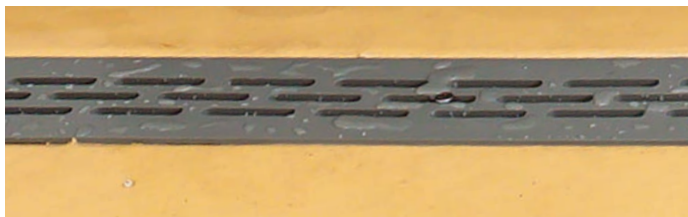
Volts 240
Amps 18.75
Watts 4500



Expansion Tank



Interior Poly Cover Channel Drain



Our drains are placed right inside the dog door against the wall, from standing in feed isle. You can just wash everything back.

Freeze Proof Exterior Water Faucet





Giraffe Tools Grandfalls Pressure Washer Plus

Max Pressure: (a) 2400 PSI, Brush Motor,
(b) 3300 PSI, Brushless Motor,

Hose Length: (a&b) 100 ft - 3X longer than others

Max Water Flow: (a) 2.0 GPM (b) 1.6 GPM

Retractable Hose: No kinking or tangling with this uniquely designed retraction function. Locking ratchet allows the pressure hose to be locked at any length

Nozzles: (a&b) Comes with 5 nozzles - 0° for crevices, 15° for driveways, 25° for outdoor general cleaning, 40° Vehicles, and Soap nozzle.

Wall Mounted: Keep everything organized and clutter free by mounting it on the wall.



Giraffe Tools Retractable Hose Reel

Hose: Heavy Duty 90' Retractable length, 5/8in hose width
Adjustable Hose Stopper

Mounting: Portable with carry handle, also comes with heavy duty 180° swivel bracket for wall mounting. Slideaway bracket is convenient for mounting and dismounting

Lead-in Hose: 6 ft pre-loaded lead in hose

Nozzle: Comes with 9 in 1 nozzle head - Soaker, rinse, mist, vertical, Shower, Center, Cone, angle, flat

Mainline Water Faucet



Forious Kitchen Faucet



Hose Port

Attach a garden hose to wash down interior kennel. Gives you access to hot and cold water.



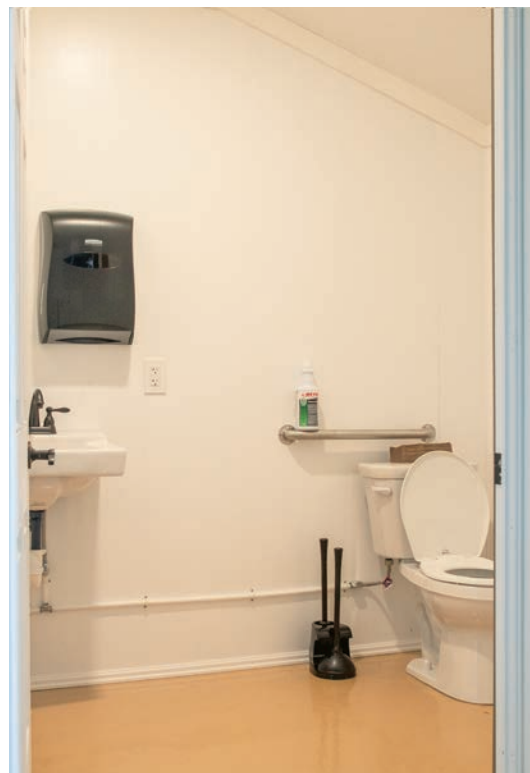
Fiberglass Sink



We customize to fit your needs!

Add a Restroom to your kennel!

Save steps and add a major convenience and time saver – with a restroom. This practical upgrade is crucial when the kennel is set apart from your main building. Let's discuss how we can add one to your kennel!



Puppy Weaning Cages

These puppy weaning cages are an economical way to keep your puppy's safe, and easy to keep a close eye on while weaning.

Size	Tier
30" x 48" x 28"	Single
30" x 48" x 56"	Double
30" x 48" x 84"	Triple
30"x48"	Black Litter Tray





- **Material:** Made of durable aluminum, ensuring long-lasting use.
- **Customization:** Fully customizable in size and features, allowing for tailored solutions.
- **Powder Coating:** Available with a powder-coated finish at no extra charge.
- **Modularity:** Purchase one or multiple cages and stack them as needed.
- **Portability:** Disassembles easily to fit through small spaces and ensures quick and easy setup.
- **Frame:** Lightweight yet sturdy construction for ease of handling and durability.
- **Litter Pan:** Made of watertight Versatex, it slides out smoothly and is easy to clean.
- **Tenderfoot Flooring:** Completely customizable with solid areas and hole opening options, and very easy to remove for cleaning.
- **Watering/Feeding Options:** Choose your feeding and watering setups, and the cages will be built for those preferences.

Customize to your needs: Choose your feeding and watering, your size, your flooring design.

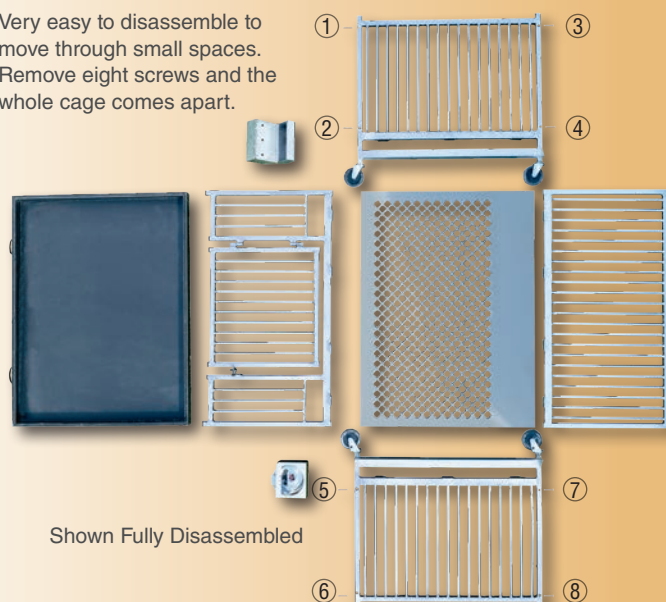


Aluminum Weaning Cages

VERSATEX Heavy Duty Litter Tray



Very easy to disassemble to move through small spaces. Remove eight screws and the whole cage comes apart.



Shown Fully Disassembled

We customize to fit your needs!

VEVOR Dog Grooming Tubs - Great Options for Pros and Home

Groomers

Professional Stainless Steel Pet Dog Bath Tub, with Ramps/ Steps, Faucet & Accessories!



Options: The Vevor tubs have varying options per table, such as which side you want the door on, and what type of ramp or step you need. Please call and we can go over the options and send you more info so you can choose and get pricing.

Durable Construction: Made from high-quality 304 stainless steel, making it corrosion-resistant.

Convenient Door Designs: These tubs have either a sliding door, or a hinged door with a seal to create a non-leaking tub. Choose to have your door open on the left or right.

Adjustable Floor Grate: The included floor grate is easily adjustable to accommodate different-sized pets, keeping them elevated to the ideal height.

Pre-installed Drain System: The grooming tubs feature a pre-installed drain kit with a removable strainer, making it easy to remove hair and debris without clogging the plumbing.

Anti-slip Surface: The tubs surface has an anti-slip design, keeping pets stable during grooming and reducing the risk of accidents.

Backsplash and Sidesplash Guards: High splash guards prevent water from spilling out during grooming, keeping the surrounding area dry and reducing cleanup.

Accessories and Attachment Points: These tubs include leash hooks, bars and/or other attachment points for securing pets during grooming, ensuring safety and stability.

Steps & Ramps: The Vevor Grooming & Bathing tubs have either steps or non-slip ramps to make getting your dog in and out of the tub easy and safe. All of our steps and ramps are easy to slide under the tub, so it's out of the way when you are grooming.

Options: The Vevor tubs have varying options per table, such as which side you want the door on, and what type of ramp or step you need.

Custom Built-in Grooming Tubs

These are custom built to your needs and to fit the space available.



Puppy Spa Station

Made with PVC to be durable and easy to clean. Equipped with sprayer faucet, slatted flooring to avoid standing water, and dual dryers with strategic placement for air circulation to dry the puppies quickly and easily. Need to dry a specific spot or drying a dog instead of a puppy? Simply pop out the hose and attach the a nozzle attachment needed and the tub keeps them contained while you dry and brush them. Getting those pups ready to meet their family doesn't need to be a dreaded task!



Shown is slatted flooring, and dryer hose attachment. Other attachment is on facing side and to the back to create circular air flow



Comes with dual dryer system with six attachments.



Dryers are portable and can be stowed behind the doors, or used independently for detailed drying use

Included:

- 48"X24" Tub
- Adjustable Sprayer & Faucet
- Removable Slatted Flooring
- Removable Dryers (Set Of 2)
- Dryer Attachments (6)



We customize to fit your needs!

High Quality Aluminum Cabinets

Aluminum cabinets are the perfect fit for your

- **Dog Kennels**
- **Basements**
- **Any Wet Areas**

Easy to clean, powder coated,
non-corrosive, durable, pest resistance,
soft-close hardware, heavy duty shelf supports.





Undermount
Stainless Steel Sink
AS362



- 25" x 22" x 14"
- 18 gauge, 304 stainless steel
- Handcrafted
- Undermount sink
- Rear drain
- Easy-to-clean, brushed finish
- Includes template & installation hardware
- Spray insulated undercoating & sound pads
- Limited lifetime warranty

Undermount
Stainless Steel Sink
AS1129



- 31.38" x 18.5" x 9"
- 18 gauge, 304 stainless steel
- Undermount sink
- Easy-to-clean, brushed finish
- Spray insulated undercoating & sound pads
- Includes template & installation hardware
- Limited lifetime warranty

Undermount Stainless
Steel Sink
AS106



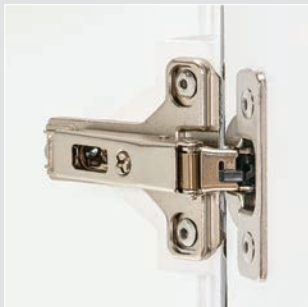
- 23.23" x 17.72" x 9"
- 18 gauge, 304 stainless steel
- Undermount sink
- Easy-to-clean, brushed finish
- Spray insulated undercoating & sound pads
- Includes template & installation hardware
- Limited lifetime warranty

We customize to fit your needs!

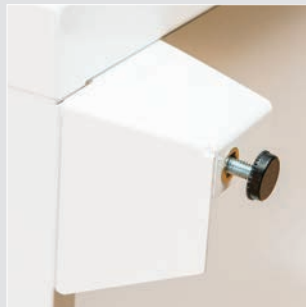
Standard Features



BLUM undermount soft close drawer guides.*



SALICE soft close hinge. Will not seize in cooler temperatures.



Adjustable leveling feet for uneven surfaces.



Shelving is adjustable and removable.

Aluminum Color Options



Sand Stone



Mocha



Blue Speckle



Grey Hammertone



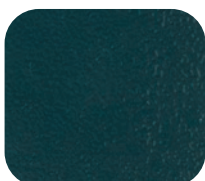
Wine Ripple



Silver Vein



White



Blue Peel



Grey Speckle



Black Hammertone



Java

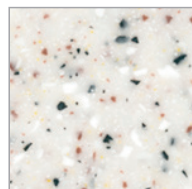


Black Peel

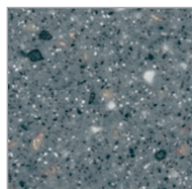
Counter Top Color Options



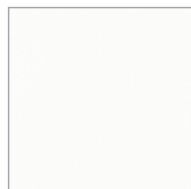
White quartz



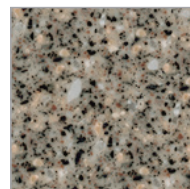
White Granite



Graphite Granite



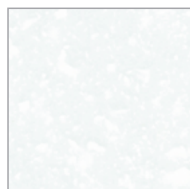
Ivory White



Wallowa



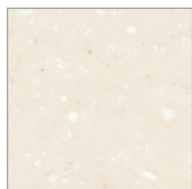
Moon Dust



Arctic Granite



Moonscape Quartz



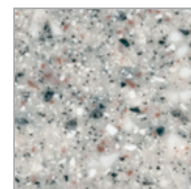
Sea Oat Quartz



Almond Pearl



Desert Sand



Gray Granite





METAL SIDING

Totally Maintenance Free
While Beautifying Your Structure



VINYL SIDING

A Cost Effective Maintenance Free
Exterior



METAL ROOF

Standing Seam Metal Roof Also
Available (Not Pictured)



DELUXE TRIM PACKAGE

STANDARD TRIM PACKAGE



DORMER

You Can Add A Dormer To Most Kennels



Z SHUTTERS



RAISED PANEL VINYL SHUTTERS



SLAT SHUTTERS



FREEZE PROOF EXTERIOR WATER FAUCET

We customize to fit your needs!

CHOOSE YOUR METAL COLORS



CHOOSE YOUR SHINGLE COLORS



CHOOSE YOUR PAINT COLORS



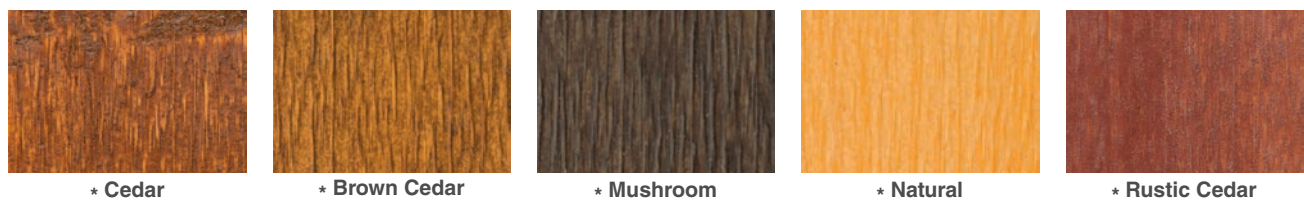
CHOOSE YOUR VINYL COLORS

* Indicates stock colors - Custom Colors Available



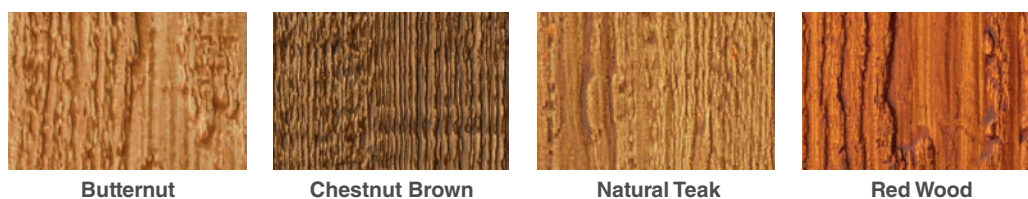
CHOOSE YOUR STAIN COLORS

* Indicates Standard Stain Colors



URETHANE Stain Colors (OPTIONAL)

Note: Works Best On LP Smart Siding.



We customize to fit your needs!



Authorized Dealer

We Attempt to Follow
USDA Regulations
According To Our
Knowledge.